



[Go to Product page](#)

Datasheet for ABIN5649709
anti-C20orf112 antibody

2 Images

Overview

Quantity:	100 µL
Target:	C20orf112 (C20ORF112)
Reactivity:	Human
Host:	Rabbit
Clonality:	Polyclonal
Conjugate:	This C20orf112 antibody is un-conjugated
Application:	Immunohistochemistry (Paraffin-embedded Sections) (IHC (p)), Immunofluorescence (IF)

Product Details

Purpose:	Rabbit polyclonal antibody raised against recombinant C20orf112.
Immunogen:	Recombinant protein corresponding to amino acids of recombinant C20orf112.
Sequence:	MRLEIYQSSQ DEPIALDKQH SRDAAITHS TYSLPASSYS QDPVYANGGL NYSYRGY GAL SSNLQPPASL QTGNHNSGP
Isotype:	IgG
Cross-Reactivity:	Human

Target Details

Target:	C20orf112 (C20ORF112)
Alternative Name:	C20orf112 (C20ORF112 Products)
Background:	Full Gene Name: chromosome 20 open reading frame 112

Target Details

Synonyms: C20orf113,DKFZp566G1424,dJ1184F4.2,dJ1184F4.4

Gene ID: 140688

Application Details

Application Notes: Immunohistochemistry (1:50-1:200)
Immunofluorescence (1-4 µg/mL)
The optimal working dilution should be determined by the end user.

Restrictions: For Research Use only

Handling

Format: Liquid

Buffer: In PBS, pH 7.2 (40 % glycerol, 0.02 % sodium azide)

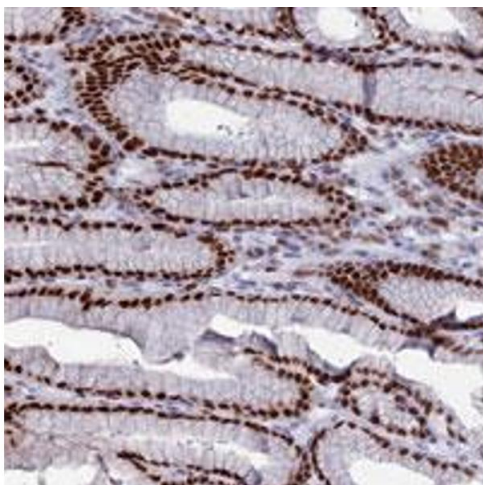
Preservative: Sodium azide

Precaution of Use: This product contains Sodium azide: a POISONOUS AND HAZARDOUS SUBSTANCE which should be handled by trained staff only.

Storage: 4 °C,-20 °C

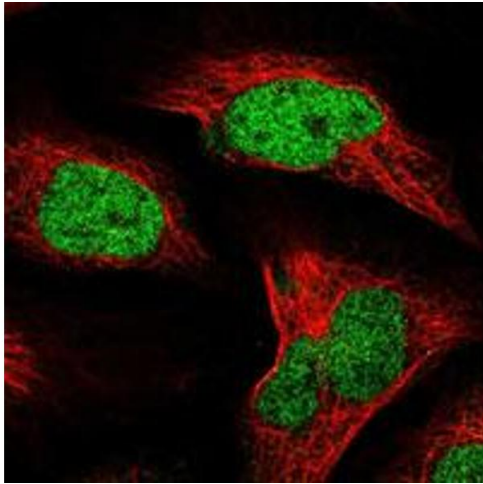
Storage Comment: Store at 4°C. For long term storage store at -20°C.
Aliquot to avoid repeated freezing and thawing.

Images



Immunohistochemistry

Image 1. Immunohistochemical staining of human stomach with C20orf112 polyclonal antibody shows strong nuclear positivity in glandular cells.



Immunofluorescence

Image 2. Immunofluorescent staining of human cell line U-2 OS with C20orf112 polyclonal antibody at 1-4 ug/mL dilution shows positivity in nucleus.