



[Go to Product page](#)

Datasheet for ABIN5649772

## anti-Anillin antibody

### 2 Images

#### Overview

Quantity:	100 µL
Target:	Anillin (ANLN)
Reactivity:	Human
Host:	Mouse
Clonality:	Monoclonal
Conjugate:	This Anillin antibody is un-conjugated
Application:	Western Blotting (WB), Immunohistochemistry (Paraffin-embedded Sections) (IHC (p))

#### Product Details

Purpose:	Mouse monoclonal antibody raised against partial recombinant human ANLN.
Immunogen:	Recombinant protein corresponding to human ANLN.
Sequence:	IVKSTLSQTV PSKGELSREI CLQSQSKDKS TTPGGTGIKP FLERFGERCQ EHSKESPARS TPHRTPIITP NTKAIQERLF KQDTSSSTTH LAQLKQERQ KELACLRGRF DKGNIWSAEK GGNSKSKQLE TKQETH
Clone:	CL0301
Isotype:	IgG1
Cross-Reactivity:	Human

#### Target Details

Target:	Anillin (ANLN)
---------	----------------

## Target Details

Alternative Name:	ANLN ( <a href="#">ANLN Products</a> )
Background:	Full Gene Name: anillin, actin binding protein Synonyms: DKFZp779A055,Scraps,scra
Gene ID:	54443

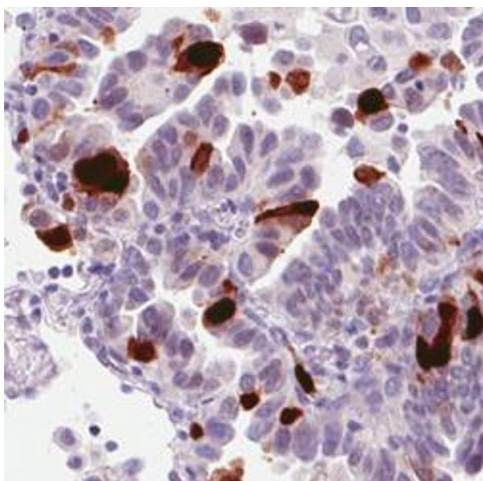
## Application Details

Application Notes:	Immunohistochemistry (Formalin/PFA-fixed paraffin-embedded sections) (1:50-1:200) Western Blot (1:500-1:1000) The optimal working dilution should be determined by the end user.
Restrictions:	For Research Use only

## Handling

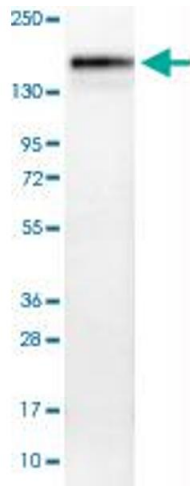
Format:	Liquid
Buffer:	In PBS, pH 7.2 (40 % glycerol, 0.02 % sodium azide).
Preservative:	Sodium azide
Precaution of Use:	This product contains Sodium azide: a POISONOUS AND HAZARDOUS SUBSTANCE which should be handled by trained staff only.
Storage:	4 °C,-20 °C
Storage Comment:	Store at 4°C. For long term storage store at -20°C. Aliquot to avoid repeated freezing and thawing.

## Images



### Immunohistochemistry

**Image 1.** Immunohistochemical staining (Formalin-fixed paraffin-embedded sections) of human lung adenocarcinoma with ANLN monoclonal antibody, clone CL0301 shows strong nuclear immunoreactivity in a subset of tumor cells.



### Western Blotting

**Image 2.** Western Blot analysis of U-251 MG cell lysate with ANLN monoclonal antibody, clone CL0301 .