



Datasheet for ABIN5649773
anti-Anillin antibody



[Go to Product page](#)

3 Images

Overview

Quantity:	100 µL
Target:	Anillin (ANLN)
Reactivity:	Human
Host:	Mouse
Clonality:	Monoclonal
Conjugate:	This Anillin antibody is un-conjugated
Application:	Western Blotting (WB), Immunofluorescence (IF), Immunohistochemistry (Paraffin-embedded Sections) (IHC (p))

Product Details

Purpose:	Mouse monoclonal antibody raised against partial recombinant human ANLN.
Immunogen:	Recombinant protein corresponding to human ANLN.
Sequence:	IVKSTLSQTV PSKGELSREI CLQSQSKDKS TTPGGTGIKP FLERFGERCQ EHSKESPARS TPHRTPIITP NTKAIQERLF KQDTSSSTTH LAQLKQERQ KELACLRGRF DKGNIWSAEK GGNSKSKQLE TKQETH
Clone:	CL0303
Isotype:	IgG1
Cross-Reactivity:	Human

Target Details

Target:	Anillin (ANLN)
---------	----------------

Target Details

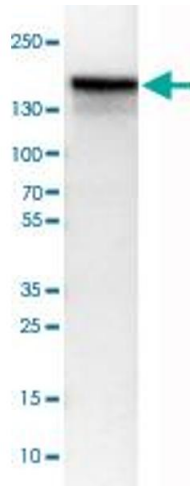
Alternative Name:	ANLN (ANLN Products)
Background:	Full Gene Name: anillin, actin binding protein Synonyms: DKFZp779A055,Scraps,scra
Gene ID:	54443

Application Details

Application Notes:	Immunofluorescence (1-4 µg/mL) Immunohistochemistry (Formalin/PFA-fixed paraffin-embedded sections) (1:50-1:200) Western Blot (1:500-1:1000) The optimal working dilution should be determined by the end user.
Restrictions:	For Research Use only

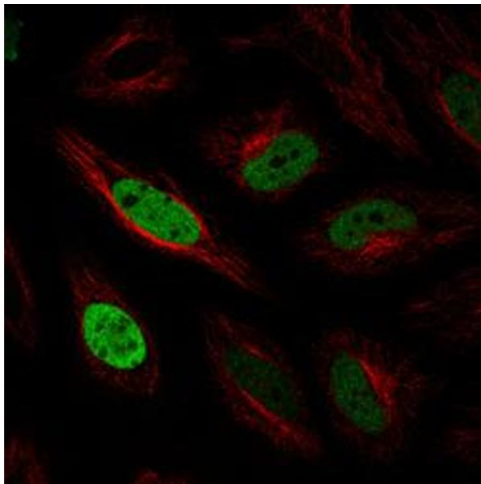
Handling

Format:	Liquid
Buffer:	In PBS, pH 7.2 (40 % glycerol, 0.02 % sodium azide).
Preservative:	Sodium azide
Precaution of Use:	This product contains Sodium azide: a POISONOUS AND HAZARDOUS SUBSTANCE which should be handled by trained staff only.
Storage:	4 °C,-20 °C
Storage Comment:	Store at 4°C. For long term storage store at -20°C. Aliquot to avoid repeated freezing and thawing.



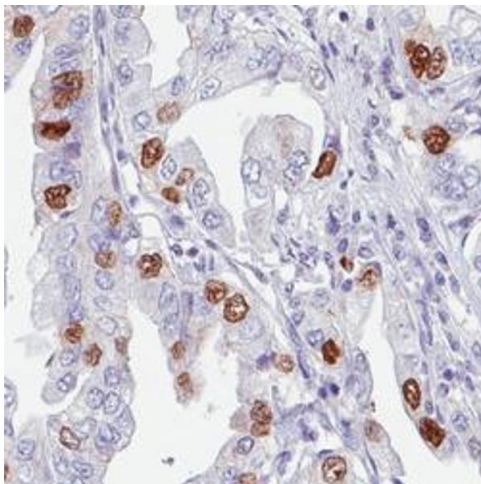
Western Blotting

Image 1. Western Blot analysis of U-251 MG cell lysate with ANLN monoclonal antibody, clone CL0303 .



Immunofluorescence

Image 2. Immunofluorescent staining of HeLa cells with ANLN monoclonal antibody, clone CL0303 (Green) shows cell cycle dependent nuclear (without nucleoli) staining. Microtubule and nuclear probes are visualized in red and blue respectively (where available).



Immunohistochemistry

Image 3. Immunohistochemical staining (Formalin-fixed paraffin-embedded sections) of human lung cancer with ANLN monoclonal antibody, clone CL0303 shows strong nuclear positivity in a subset of tumor cells.