



[Go to Product page](#)

Datasheet for ABIN5649824
anti-BMP2K antibody

1 Image

Overview

Quantity:	100 µL
Target:	BMP2K
Reactivity:	Human
Host:	Rabbit
Clonality:	Polyclonal
Conjugate:	This BMP2K antibody is un-conjugated
Application:	Immunohistochemistry (Paraffin-embedded Sections) (IHC (p))

Product Details

Purpose:	Rabbit polyclonal antibody raised against partial recombinant human BMP2K.
Immunogen:	Recombinant protein corresponding to human BMP2K.
Sequence:	FISHSGSPEK KAEHSSINQE NGTANPIKNG KTSPASKDQR TGKKTSVQGG VQKGNDESES DFESDPPSPK SSEEEEQDDE EV
Isotype:	IgG
Cross-Reactivity:	Human

Target Details

Target:	BMP2K
Alternative Name:	BMP2K (BMP2K Products)
Background:	Full Gene Name: BMP2 inducible kinase

Target Details

Synonyms: BIKE,DKFZp434K0614,DKFZp434P0116,HRIHFB2017

Gene ID: 55589

Application Details

Application Notes: Immunohistochemistry (Formalin/PFA-fixed paraffin-embedded sections) (1:50-1:200)
The optimal working dilution should be determined by the end user.

Restrictions: For Research Use only

Handling

Format: Liquid

Buffer: In PBS, pH 7.2 (40 % glycerol, 0.02 % sodium azide).

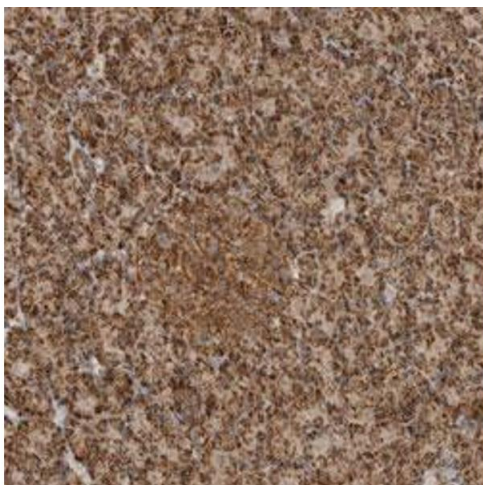
Preservative: Sodium azide

Precaution of Use: This product contains Sodium azide: a POISONOUS AND HAZARDOUS SUBSTANCE which should be handled by trained staff only.

Storage: 4 °C,-20 °C

Storage Comment: Store at 4°C. For long term storage store at -20°C.
Aliquot to avoid repeated freezing and thawing.

Images



Immunohistochemistry

Image 1. Immunohistochemical staining (Formalin-fixed paraffin-embedded sections) of human pancreas with BMP2K polyclonal antibody shows strong cytoplasmic positivity with a granular pattern in exocrine and endocrine cells.