



Datasheet for ABIN5649839

anti-CA12 antibody



[Go to Product page](#)

2 Images

Overview

Quantity:	100 µL
Target:	CA12
Reactivity:	Human
Host:	Mouse
Clonality:	Monoclonal
Conjugate:	This CA12 antibody is un-conjugated
Application:	Western Blotting (WB), Immunohistochemistry (Paraffin-embedded Sections) (IHC (p))

Product Details

Purpose:	Mouse monoclonal antibody raised against partial recombinant human CA12.
Immunogen:	Recombinant protein corresponding to human CA12.
Sequence:	TASNKSEGLA VLAVLIEMGS FNPSYDKIFS HLQHVKYKGQ EAFVPGFNIE ELLPERTAEY YRYRGSLLTP PCNPTVLWTV FRNPVQISQE QLLALETALY CTHMDDPSPR EMINNFRQVQ
Clone:	CL0278
Isotype:	IgG2a
Cross-Reactivity:	Human

Target Details

Target:	CA12
Alternative Name:	CA12 (CA12 Products)

Target Details

Background: Full Gene Name: carbonic anhydrase XII
Synonyms: CAXII,FLJ20151,HsT18816

Gene ID: 771

Application Details

Application Notes: Immunohistochemistry (Formalin/PFA-fixed paraffin-embedded sections) (1:2500-1:5000)
Western Blot (1:500-1:1000)
The optimal working dilution should be determined by the end user.

Restrictions: For Research Use only

Handling

Format: Liquid

Buffer: In PBS, pH 7.2 (40 % glycerol, 0.02 % sodium azide).

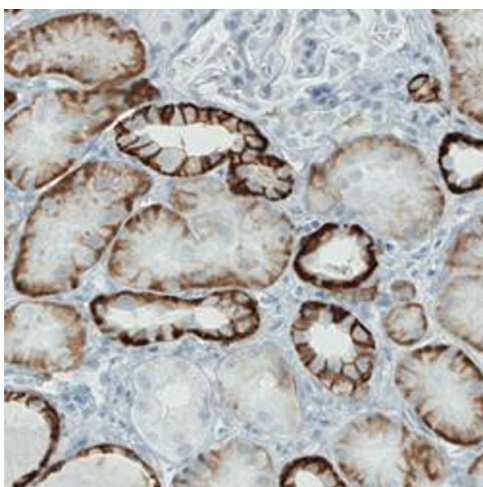
Preservative: Sodium azide

Precaution of Use: This product contains Sodium azide: a POISONOUS AND HAZARDOUS SUBSTANCE which should be handled by trained staff only.

Storage: 4 °C,-20 °C

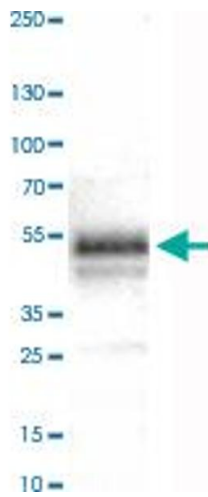
Storage Comment: Store at 4°C. For long term storage store at -20°C.
Aliquot to avoid repeated freezing and thawing.

Images



Immunohistochemistry

Image 1. Immunohistochemical staining (Formalin-fixed paraffin-embedded sections) of human kidney with CA12 monoclonal antibody, clone CL0278 shows strong membranous immunoreactivity in renal tubules, but not glomeruli.



Western Blotting

Image 2. Western Blot analysis of human tonsil tissue lysate with CA12 monoclonal antibody, clone CL0278 .