



[Go to Product page](#)

Datasheet for ABIN5649840

anti-CA12 antibody

2 Images

Overview

Quantity:	100 µL
Target:	CA12
Reactivity:	Human
Host:	Mouse
Clonality:	Monoclonal
Conjugate:	This CA12 antibody is un-conjugated
Application:	Western Blotting (WB), Immunohistochemistry (Paraffin-embedded Sections) (IHC (p))

Product Details

Purpose:	Mouse monoclonal antibody raised against partial recombinant human CA12.
Immunogen:	Recombinant protein corresponding to human CA12.
Sequence:	TASNKSEGLA VLAVLIEMGS FNPSYDKIFS HLQHVKYKGQ EAFVPGFNIE ELLPERTAEY YRYRGSLLTP PCNPTVLWTV FRNPVQISQE QLLALETALY CTHMDDPSPR EMINNFRQVQ
Clone:	CL0280
Isotype:	IgG1
Cross-Reactivity:	Human

Target Details

Target:	CA12
Alternative Name:	CA12 (CA12 Products)

Target Details

Background: Full Gene Name: carbonic anhydrase XII
Synonyms: CAXII,FLJ20151,HsT18816

Gene ID: 771

Application Details

Application Notes: Immunohistochemistry (Formalin/PFA-fixed paraffin-embedded sections) (1:200-1:500)
Western Blot (1:500-1:1000)
The optimal working dilution should be determined by the end user.

Restrictions: For Research Use only

Handling

Format: Liquid

Buffer: In PBS, pH 7.2 (40 % glycerol, 0.02 % sodium azide).

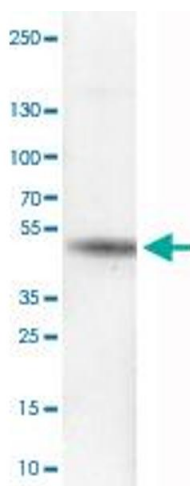
Preservative: Sodium azide

Precaution of Use: This product contains Sodium azide: a POISONOUS AND HAZARDOUS SUBSTANCE which should be handled by trained staff only.

Storage: 4 °C, -20 °C

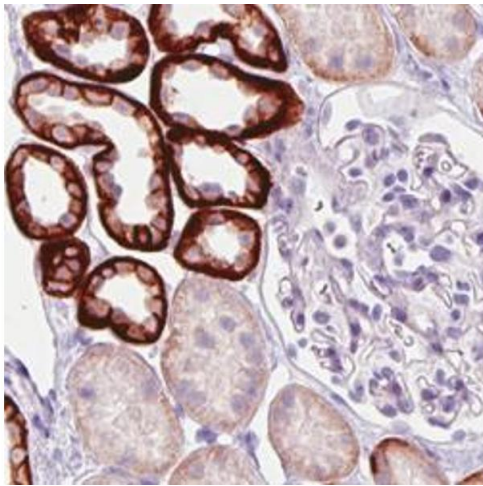
Storage Comment: Store at 4°C. For long term storage store at -20°C.
Aliquot to avoid repeated freezing and thawing.

Images



Western Blotting

Image 1. Western Blot analysis of RT-4 cell lysate with CA12 monoclonal antibody, clone CL0280 .



Immunohistochemistry

Image 2. Immunohistochemical staining (Formalin-fixed paraffin-embedded sections) of human kidney with CA12 monoclonal antibody, clone CL0280 shows strong membranous and/or moderate cytoplasmic immunoreactivity in subsets of renal tubules, while glomeruli are negative.