

Datasheet for ABIN5649846

**anti-CARS antibody****2** Images[Go to Product page](#)

## Overview

Quantity:	100 µL
Target:	CARS
Reactivity:	Human
Host:	Mouse
Clonality:	Monoclonal
Conjugate:	This CARS antibody is un-conjugated
Application:	Western Blotting (WB), Immunohistochemistry (Paraffin-embedded Sections) (IHC (p))

## Product Details

Purpose:	Mouse monoclonal antibody raised against partial recombinant human CARS.
Immunogen:	Recombinant protein corresponding to human CARS.
Sequence:	SQCPLYMAAR KAVRKRPNQA LLENIALYLT HMLKIFGAVE EDSSLGFPVG GPGTSLSLEA TVMPYLQVLS EFREGVRKIA REQKVPEILQ LSDALRDNIL PELGVRFEDH EGLPTVVKLV DRNTLLKERE EKRRVE
Clone:	CL2302
Isotype:	IgG1
Cross-Reactivity:	Human

## Target Details

Target:	CARS
---------	------

## Target Details

Alternative Name:	CARS ( <a href="#">CARS Products</a> )
Background:	Full Gene Name: cysteinyl-tRNA synthetase Synonyms: CARS1,CYSRS,MGC:11246
Gene ID:	833

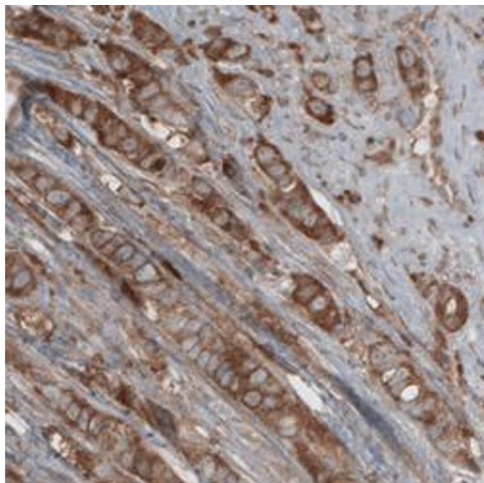
## Application Details

Application Notes:	Immunohistochemistry (Formalin/PFA-fixed paraffin-embedded sections) (1:1000-1:2500) Western Blot (1:500-1:1000) The optimal working dilution should be determined by the end user.
Restrictions:	For Research Use only

## Handling

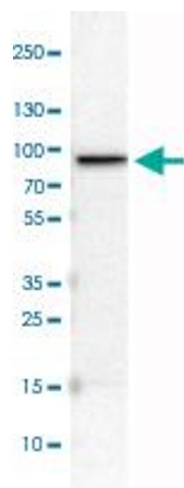
Format:	Liquid
Buffer:	In PBS, pH 7.2 (40 % glycerol, 0.02 % sodium azide).
Preservative:	Sodium azide
Precaution of Use:	This product contains Sodium azide: a POISONOUS AND HAZARDOUS SUBSTANCE which should be handled by trained staff only.
Storage:	4 °C,-20 °C
Storage Comment:	Store at 4°C. For long term storage store at -20°C. Aliquot to avoid repeated freezing and thawing.

## Images



### Immunohistochemistry

**Image 1.** Immunohistochemical staining (Formalin-fixed paraffin-embedded sections) of human breast cancer with CARS monoclonal antibody, clone CL2302 shows cytoplasmic immunoreactivity in tumor cells.



Western Blotting

**Image 2.** Western Blot analysis of U-251 MG cell lysate with CARS monoclonal antibody, clone CL2302 .