

Datasheet for ABIN5649848

anti-CARS antibody**1** Image[Go to Product page](#)

Overview

Quantity:	100 µL
Target:	CARS
Reactivity:	Human
Host:	Mouse
Clonality:	Monoclonal
Conjugate:	This CARS antibody is un-conjugated
Application:	Immunohistochemistry (Paraffin-embedded Sections) (IHC (p))

Product Details

Purpose:	Mouse monoclonal antibody raised against partial recombinant human CARS.
Immunogen:	Recombinant protein corresponding to human CARS.
Sequence:	SQCPLYMAAR KAVRKRPNQA LLENIALYLT HMLKIFGAVE EDSSLGFPVG GPGTSLSLEA TVMPYLQVLS EFREGVRKIA REQKVPEILQ LSDALRDNIL PELGVRFEDH EGLPTVVKL DRNTLLKERE EKRRVE
Clone:	CL2309
Isotype:	IgG2b
Cross-Reactivity:	Human

Target Details

Target:	CARS
---------	------

Target Details

Alternative Name:	CARS (CARS Products)
Background:	Full Gene Name: cysteinyl-tRNA synthetase Synonyms: CARS1,CYSRS,MGC:11246
Gene ID:	833

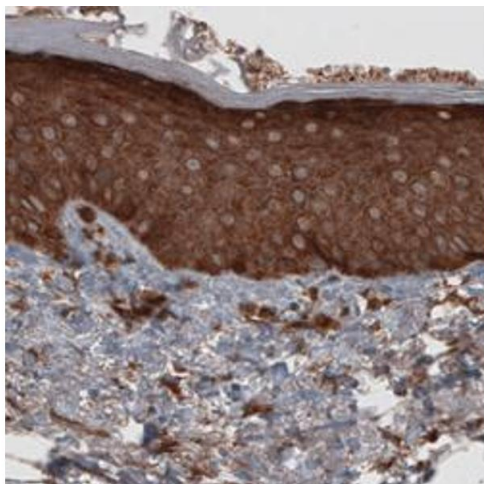
Application Details

Application Notes:	Immunohistochemistry (Formalin/PFA-fixed paraffin-embedded sections) (1:2500-1:5000) The optimal working dilution should be determined by the end user.
Restrictions:	For Research Use only

Handling

Format:	Liquid
Buffer:	In PBS, pH 7.2 (40 % glycerol, 0.02 % sodium azide).
Preservative:	Sodium azide
Precaution of Use:	This product contains Sodium azide: a POISONOUS AND HAZARDOUS SUBSTANCE which should be handled by trained staff only.
Storage:	4 °C,-20 °C
Storage Comment:	Store at 4°C. For long term storage store at -20°C. Aliquot to avoid repeated freezing and thawing.

Images



Immunohistochemistry

Image 1. Immunohistochemical staining (Formalin-fixed paraffin-embedded sections) of human skin with CARS monoclonal antibody, clone CL2309 shows strong cytoplasmic positivity in epidermis cells.