



Datasheet for ABIN5649881
anti-Cnpase antibody



[Go to Product page](#)

2 Images

Overview

Quantity:	100 µL
Target:	Cnpase (CNP)
Reactivity:	Human
Host:	Mouse
Clonality:	Monoclonal
Conjugate:	This Cnpase antibody is un-conjugated
Application:	Western Blotting (WB), Immunohistochemistry (Paraffin-embedded Sections) (IHC (p))

Product Details

Purpose:	Mouse monoclonal antibody raised against partial recombinant human CNP.
Immunogen:	Recombinant protein corresponding to human CNP.
Sequence:	PGVLHCTTKF CDYGKAPGAE EYAQQDVLKK SYSKAFTLTI SALFVTPKTT GARVELSEQQ LQLWPSDVDK LSPTDNLPRG SRAHITL
Clone:	CL2871
Isotype:	IgG2a
Cross-Reactivity:	Human, Mouse, Rat

Target Details

Target:	Cnpase (CNP)
Alternative Name:	CNP (CNP Products)

Target Details

Background: Full Gene Name: 2',3'-cyclic nucleotide 3' phosphodiesterase
Synonyms: CNP1

Gene ID: 1267

Application Details

Application Notes: Immunohistochemistry (Formalin/PFA-fixed paraffin-embedded sections) (1:2500-1:5000)
Western Blot (1:500-1:1000)
The optimal working dilution should be determined by the end user.

Restrictions: For Research Use only

Handling

Format: Liquid

Buffer: In PBS, pH 7.2 (40 % glycerol, 0.02 % sodium azide).

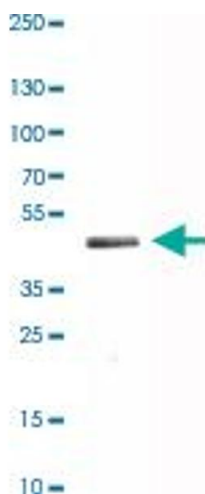
Preservative: Sodium azide

Precaution of Use: This product contains Sodium azide: a POISONOUS AND HAZARDOUS SUBSTANCE which should be handled by trained staff only.

Storage: 4 °C, -20 °C

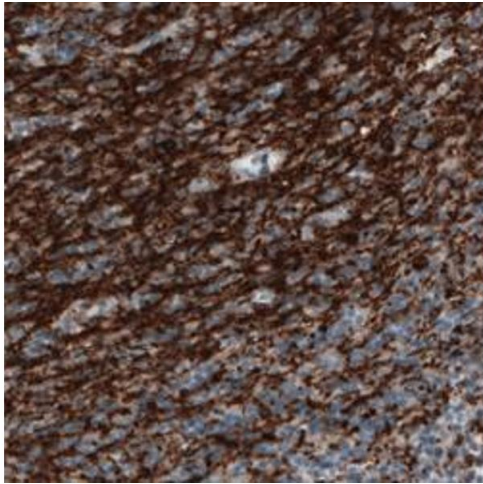
Storage Comment: Store at 4°C. For long term storage store at -20°C.
Aliquot to avoid repeated freezing and thawing.

Images



Western Blotting

Image 1. Western Blot analysis of human cerebral cortex tissue lysate with CNP monoclonal antibody, clone CL2871 .



Immunohistochemistry

Image 2. Immunohistochemical staining (Formalin-fixed paraffin-embedded sections) of human cerebellum with CNP monoclonal antibody, clone CL2871 shows strong immunoreactivity in myelinated neural processes.