

Datasheet for ABIN5649886

anti-CS antibody**3** Images[Go to Product page](#)

Overview

Quantity:	100 µL
Target:	CS
Reactivity:	Human
Host:	Mouse
Clonality:	Monoclonal
Conjugate:	This CS antibody is un-conjugated
Application:	Western Blotting (WB), Immunofluorescence (IF), Immunohistochemistry (Paraffin-embedded Sections) (IHC (p))

Product Details

Purpose:	Mouse monoclonal antibody raised against partial recombinant human CS.
Immunogen:	Recombinant protein corresponding to human CS.
Sequence:	ADLIPKEQAR IKTFRQQHGK TVVGQITVDM MYGGMRGMKG LUYETSVLDP DEGIRFRGFS IPECQKLLPK AKGGEEPLPE GLFWLLVTGH IPTEEQVSWL
Clone:	CL2545
Isotype:	IgG1
Cross-Reactivity:	Human

Target Details

Target:	CS
---------	----

Target Details

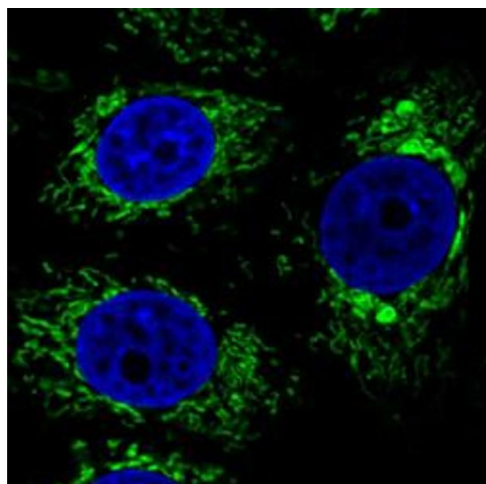
Alternative Name:	citrate synthase (CS Products)
Background:	Full Gene Name: citrate synthase
Gene ID:	1431
UniProt:	O75390

Application Details

Application Notes:	Immunofluorescence (1-4 µg/mL) Immunohistochemistry (Formalin/PFA-fixed paraffin-embedded sections) (1:2500-1:5000) Western Blot (1:500-1:1000) The optimal working dilution should be determined by the end user.
Restrictions:	For Research Use only

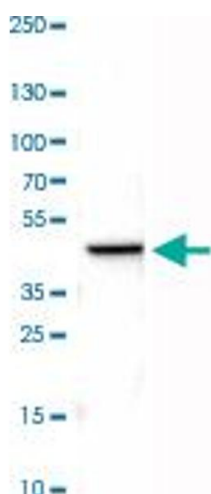
Handling

Format:	Liquid
Buffer:	In PBS, pH 7.2 (40 % glycerol, 0.02 % sodium azide).
Preservative:	Sodium azide
Precaution of Use:	This product contains Sodium azide: a POISONOUS AND HAZARDOUS SUBSTANCE which should be handled by trained staff only.
Storage:	4 °C,-20 °C
Storage Comment:	Store at 4°C. For long term storage store at -20°C. Aliquot to avoid repeated freezing and thawing.



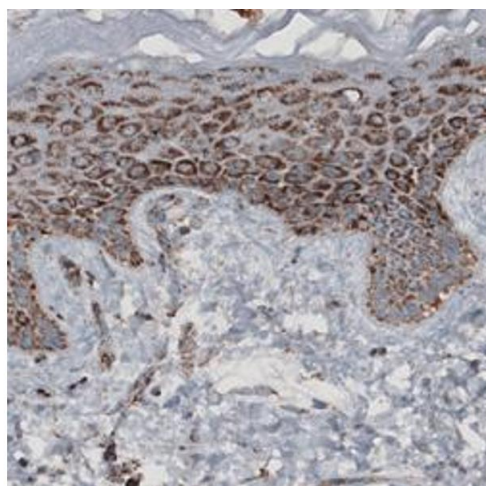
Immunofluorescence

Image 1. Immunofluorescent staining of MCF7 cells with CS monoclonal antibody, clone CL2545 (Green) shows specific mitochondrial. Microtubule and nuclear probes are visualized in red and blue respectively (where available).



Western Blotting

Image 2. Western Blot analysis of U-251 MG cell lysate with CS monoclonal antibody, clone CL2545 .



Immunohistochemistry

Image 3. Immunohistochemical staining (Formalin-fixed paraffin-embedded sections) of human skin with CS monoclonal antibody, clone CL2545 shows granular cytoplasmic immunoreactivity in epithelial cells.