



[Go to Product page](#)

Datasheet for ABIN5649893

## anti-CTCF antibody

### 2 Images

#### Overview

Quantity:	100 µL
Target:	CTCF
Reactivity:	Human
Host:	Mouse
Clonality:	Monoclonal
Conjugate:	This CTCF antibody is un-conjugated
Application:	Western Blotting (WB), Immunohistochemistry (Paraffin-embedded Sections) (IHC (p))

#### Product Details

Purpose:	Mouse monoclonal antibody raised against partial recombinant human CTCF.
Immunogen:	Recombinant protein corresponding to human CTCF.
Sequence:	QNQTDGGEVW QDVNSSVQMV MMEQLDPTLL QMKTEVMEGT VAPEAEAAVD DTQIITLQVW NMEEQPINIG ELQLVQVPVP VTPVATTSV EELQGAYENE VSKEGLAESE PMICHTLPLP EGFQVVKVGA NGEVETLEQG ELPPQEDP
Clone:	CL0305
Isotype:	IgG1
Cross-Reactivity:	Human

#### Target Details

Target:	CTCF
---------	------

## Target Details

Alternative Name:	CTCF ( <a href="#">CTCF Products</a> )
Background:	Full Gene Name: CCCTC-binding factor (zinc finger protein)
Gene ID:	10664

## Application Details

Application Notes:	Immunohistochemistry (Formalin/PFA-fixed paraffin-embedded sections) (1:500-1:1000) Western Blot (1:500-1:1000) The optimal working dilution should be determined by the end user.
Restrictions:	For Research Use only

## Handling

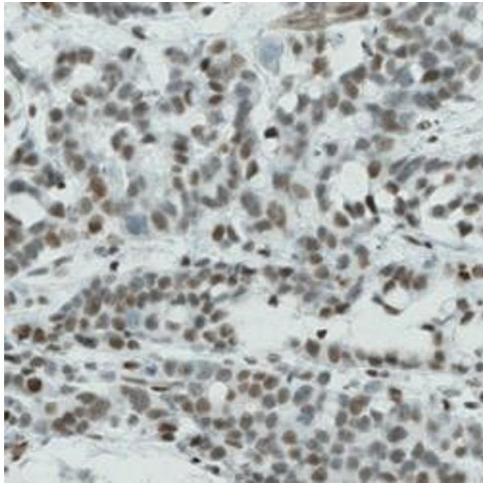
Format:	Liquid
Buffer:	In PBS, pH 7.2 (40 % glycerol, 0.02 % sodium azide).
Preservative:	Sodium azide
Precaution of Use:	This product contains Sodium azide: a POISONOUS AND HAZARDOUS SUBSTANCE which should be handled by trained staff only.
Storage:	4 °C, -20 °C
Storage Comment:	Store at 4°C. For long term storage store at -20°C. Aliquot to avoid repeated freezing and thawing.

## Images



### Western Blotting

**Image 1.** Western Blot analysis of U-251 MG cell lysate with CTCF monoclonal antibody, clone CL0305 .



### Immunohistochemistry

**Image 2.** Immunohistochemical staining (Formalin-fixed paraffin-embedded sections) of human stomach cancer with CTCF monoclonal antibody, clone CL0305 shows nuclear immunoreactivity in tumor cells.