



[Go to Product page](#)

Datasheet for ABIN5649949  
**anti-Fibulin 1 antibody**

3 Images

Overview

Quantity:	100 µL
Target:	Fibulin 1 (FBLN1)
Reactivity:	Human
Host:	Mouse
Clonality:	Monoclonal
Conjugate:	This Fibulin 1 antibody is un-conjugated
Application:	Western Blotting (WB), Immunohistochemistry (Paraffin-embedded Sections) (IHC (p)), Immunofluorescence (IF)

Product Details

Purpose:	Mouse monoclonal antibody raised against partial recombinant human FBLN1.
Immunogen:	Recombinant protein corresponding to human FBLN1.
Sequence:	CESGIHNCLP DFICQNTLGS FRCRPKLQCK SGFIQDALGN CIDINECLSI SAPCPIGHTC INTEGSYTCQ KNVPNCGRGY HLNEEGTRCV DVDECAPPAE PCGKGHRCVN SPGSFRCECK TGYFFDGISR MCVDVNE
Clone:	CL0337
Isotype:	IgG1
Cross-Reactivity:	Human

Target Details

Target:	Fibulin 1 (FBLN1)
---------	-------------------

## Target Details

---

Alternative Name: FBLN1 ([FBLN1 Products](#))

---

Background: Full Gene Name: fibulin 1  
Synonyms: FBLN

---

Gene ID: 2192

## Application Details

---

Application Notes: Immunofluorescence (1-4 µg/mL)  
Immunohistochemistry (Formalin/PFA-fixed paraffin-embedded sections) (1:50-1:200)  
Western Blot (1:500-1:1000)  
The optimal working dilution should be determined by the end user.

---

Restrictions: For Research Use only

## Handling

---

Format: Liquid

---

Buffer: In PBS, pH 7.2 (40 % glycerol, 0.02 % sodium azide).

---

Preservative: Sodium azide

---

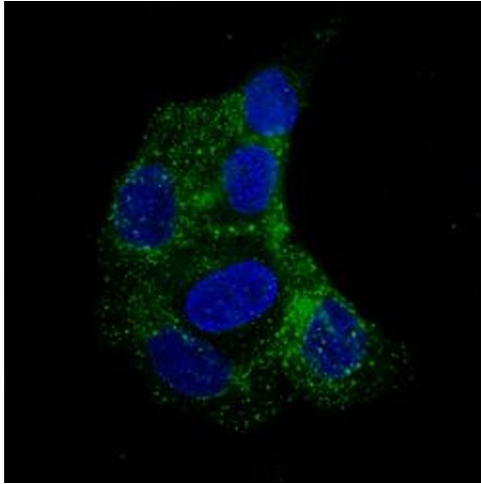
Precaution of Use: This product contains Sodium azide: a POISONOUS AND HAZARDOUS SUBSTANCE which should be handled by trained staff only.

---

Storage: 4 °C,-20 °C

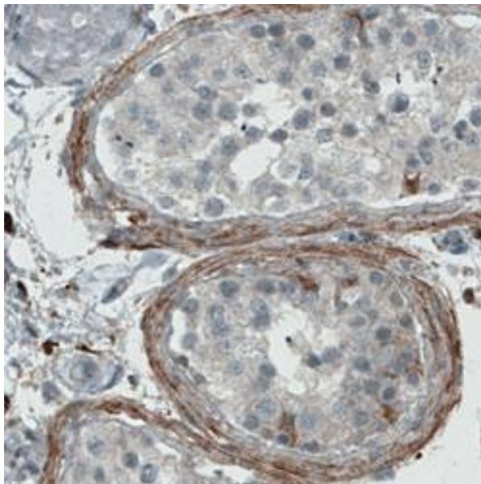
---

Storage Comment: Store at 4°C. For long term storage store at -20°C.  
Aliquot to avoid repeated freezing and thawing.



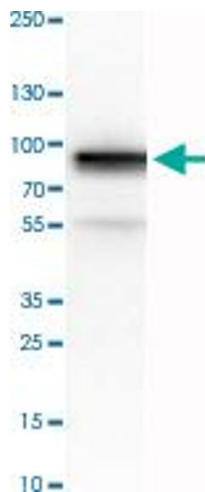
### Immunofluorescence

**Image 1.** Immunofluorescent staining of RT-4 cells with FBLN1 monoclonal antibody, clone CL0337 (Green) shows specific staining in vesicles. Microtubule and nuclear probes are visualized in red and blue, respectively (where available).



### Immunohistochemistry

**Image 2.** Immunohistochemical staining (Formalin-fixed paraffin-embedded sections) of human testis with FBLN1 monoclonal antibody, clone CL0337 shows positivity the extracellular matrix.



### Western Blotting

**Image 3.** Western Blot analysis of human plasma tissue lysate with FBLN1 monoclonal antibody, clone CL0337 .