

Datasheet for ABIN5650000

anti-HMGCR antibody**2** Images[Go to Product page](#)

Overview

Quantity:	100 µL
Target:	HMGCR
Reactivity:	Human
Host:	Mouse
Clonality:	Monoclonal
Conjugate:	This HMGCR antibody is un-conjugated
Application:	Western Blotting (WB), Immunohistochemistry (Paraffin-embedded Sections) (IHC (p))

Product Details

Purpose:	Mouse monoclonal antibody raised against partial recombinant human HMGCR.
Immunogen:	Recombinant protein corresponding to human HMGCR.
Sequence:	GAKFLSDAEI IQLVNAKHIP AYKLETLMET HERGVSI RRQ LLSKKLSEPS SLQYLPYRDY NYSLVMGACC ENVIGYMPIP VGVAGPLCLD EKEFQVPMAT TEGCLVASTN RGCRAIGLGG GASSRVLADG MTRGPVVRLP RACDSA EVKA WLETSEGF AV IKEAFDSTSR FARLQKLHTS IAGRNLYIRF QSRSGDAMGM NMISKGTEKA LSKLHEYFPE MQILAVSGNY CTDKKPAAIN WIEGRGKSVV CEAVIPAKVV REVLKTTT
Clone:	CL0260
Isotype:	IgG1
Cross-Reactivity:	Human

Target Details

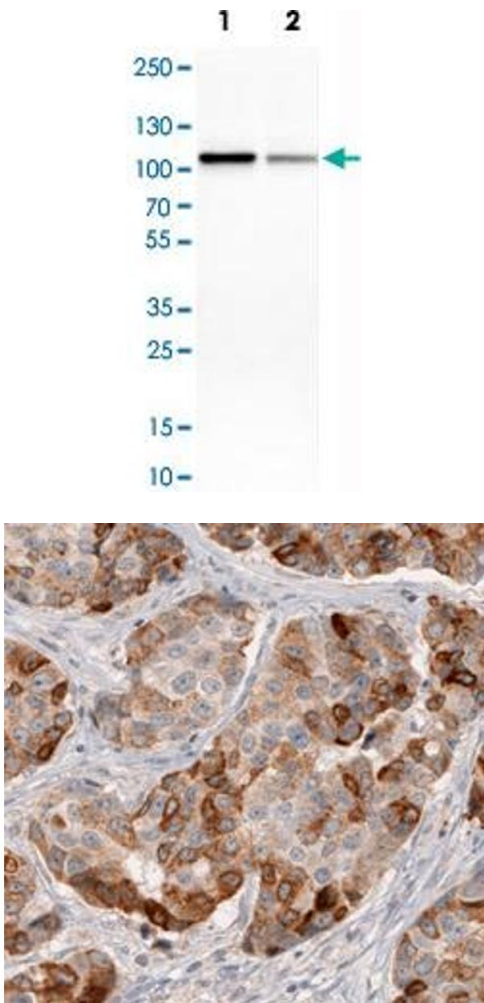
Target:	HMGCR
Alternative Name:	HMGCR (HMGCR Products)
Background:	Full Gene Name: 3-hydroxy-3-methylglutaryl-Coenzyme A reductase
Gene ID:	3156
Pathways:	AMPK Signaling , Negative Regulation of Hormone Secretion , Regulation of Lipid Metabolism by PPARalpha

Application Details

Application Notes:	Immunohistochemistry (Formalin/PFA-fixed paraffin-embedded sections) (1:50-1:200) Western Blot (1:500-1:1000) The optimal working dilution should be determined by the end user.
Restrictions:	For Research Use only

Handling

Format:	Liquid
Buffer:	In PBS, pH 7.2 (40 % glycerol, 0.02 % sodium azide).
Preservative:	Sodium azide
Precaution of Use:	This product contains Sodium azide: a POISONOUS AND HAZARDOUS SUBSTANCE which should be handled by trained staff only.
Storage:	4 °C,-20 °C
Storage Comment:	Store at 4°C. For long term storage store at -20°C. Aliquot to avoid repeated freezing and thawing.



Western Blotting

Image 1. Western Blot analysis of Lane 1: MCF-7 and Lane 2: HepG2 cell lysates with HMGCRC monoclonal antibody, clone CL0260 .

Immunohistochemistry

Image 2. Immunohistochemical staining (Formalin-fixed paraffin-embedded sections) of human breast cancer with HMGCRC monoclonal antibody, clone CL0260 shows moderate to strong cytoplasmic immunoreactivity in tumor cells.