

Datasheet for ABIN5650001

**anti-HMGCR antibody****2** Images[Go to Product page](#)

## Overview

Quantity:	100 µL
Target:	HMGCR
Reactivity:	Human
Host:	Mouse
Clonality:	Monoclonal
Conjugate:	This HMGCR antibody is un-conjugated
Application:	Western Blotting (WB), Immunohistochemistry (Paraffin-embedded Sections) (IHC (p))

## Product Details

Purpose:	Mouse monoclonal antibody raised against partial recombinant human HMGCR.
Immunogen:	Recombinant protein corresponding to human HMGCR.
Sequence:	HIPAYKLETL METHERGVSI RRQLLSKKLS EPSSLQYLPY RDYNYSLVMG ACCENVIGYM PIPVGVAGPL CLDEKEFQVP MATTEGCLVA
Clone:	CL0259
Isotype:	IgG2a
Cross-Reactivity:	Human

## Target Details

Target:	HMGCR
Alternative Name:	HMGCR ( <a href="#">HMGCR Products</a> )

## Target Details

Background:	Full Gene Name: 3-hydroxy-3-methylglutaryl-Coenzyme A reductase
Gene ID:	3156
Pathways:	<a href="#">AMPK Signaling</a> , <a href="#">Negative Regulation of Hormone Secretion</a> , <a href="#">Regulation of Lipid Metabolism by PPARalpha</a>

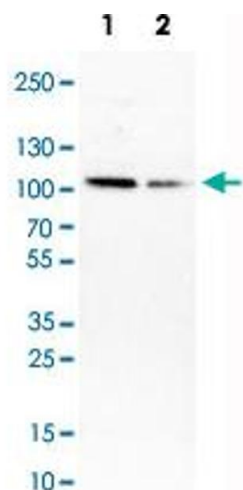
## Application Details

Application Notes:	Immunohistochemistry (Formalin/PFA-fixed paraffin-embedded sections) (1:50-1:200) Western Blot (1:500-1:1000) The optimal working dilution should be determined by the end user.
Restrictions:	For Research Use only

## Handling

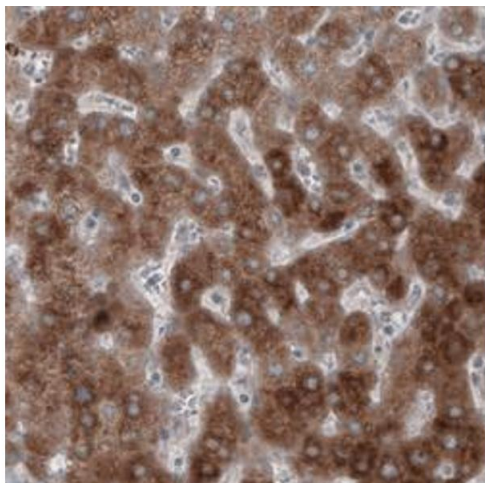
Format:	Liquid
Buffer:	In PBS, pH 7.2 (40 % glycerol, 0.02 % sodium azide).
Preservative:	Sodium azide
Precaution of Use:	This product contains Sodium azide: a POISONOUS AND HAZARDOUS SUBSTANCE which should be handled by trained staff only.
Storage:	4 °C,-20 °C
Storage Comment:	Store at 4°C. For long term storage store at -20°C. Aliquot to avoid repeated freezing and thawing.

## Images



### Western Blotting

**Image 1.** Western Blot analysis of Lane 1: MCF-7 and Lane 2: HepG2 cell lysates with HMGR monoclonal antibody, clone CL0259 .



#### Immunohistochemistry

**Image 2.** Immunohistochemical staining (Formalin-fixed paraffin-embedded sections) of human liver with HMGCR monoclonal antibody, clone CL0259 shows strong cytoplasmic immunoreactivity.