



[Go to Product page](#)

Datasheet for ABIN5650007

## anti-GRP94 antibody

### 3 Images

#### Overview

Quantity:	100 µL
Target:	GRP94 (HSP90B1)
Reactivity:	Human
Host:	Mouse
Clonality:	Monoclonal
Conjugate:	This GRP94 antibody is un-conjugated
Application:	Western Blotting (WB), Immunofluorescence (IF), Immunohistochemistry (Paraffin-embedded Sections) (IHC (p))

#### Product Details

Purpose:	Mouse monoclonal antibody raised against partial recombinant human HSP90B1.
Immunogen:	Recombinant protein corresponding to human HSP90B1.
Sequence:	SGNMERIMKA QAYQTGKDIS TNYASQKKT FEINPRHPLI RDMLRRIKED EDDKTVLDLA VVLFFETATLR SGYLLPDTKA YGDRIERMLR LSLNIDPDAK VEEPEEEPE ETAEDTTEDT EQDEDEEMDV GTDEEEETAK ESTA
Clone:	CL2647
Isotype:	IgG2b
Cross-Reactivity:	Human

#### Target Details

Target:	GRP94 (HSP90B1)
---------	-----------------

## Target Details

---

Alternative Name:	HSP90B1 ( <a href="#">HSP90B1 Products</a> )
Background:	Full Gene Name: heat shock protein 90 kDa beta (Grp94), member 1 Synonyms: ECGP,GP96,GRP94,TRA1
Gene ID:	7184
Pathways:	<a href="#">Thyroid Hormone Synthesis</a> , <a href="#">Activation of Innate immune Response</a> , <a href="#">ER-Nucleus Signaling</a> , <a href="#">Toll-Like Receptors Cascades</a>

## Application Details

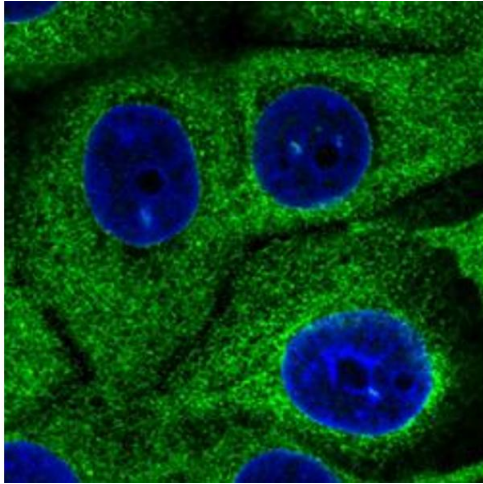
---

Application Notes:	Immunofluorescence (1-4 µg/mL) Immunohistochemistry (Formalin/PFA-fixed paraffin-embedded sections) (1:5000-1:10000) Western Blot (1:500-1:1000) The optimal working dilution should be determined by the end user.
Restrictions:	For Research Use only

## Handling

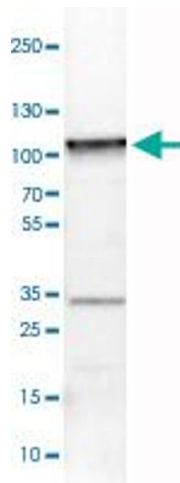
---

Format:	Liquid
Buffer:	In PBS, pH 7.2 (40 % glycerol, 0.02 % sodium azide).
Preservative:	Sodium azide
Precaution of Use:	This product contains Sodium azide: a POISONOUS AND HAZARDOUS SUBSTANCE which should be handled by trained staff only.
Storage:	4 °C,-20 °C
Storage Comment:	Store at 4°C. For long term storage store at -20°C. Aliquot to avoid repeated freezing and thawing.



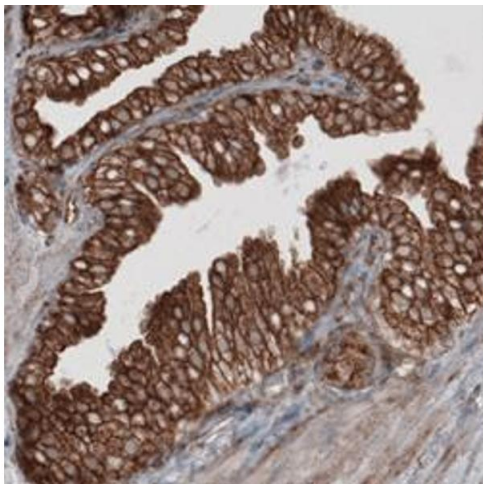
### Immunofluorescence

**Image 1.** Immunofluorescent staining of MCF7 cells with HSP90B1 monoclonal antibody, clone CL2647 (Green) shows specific endoplasmic reticulum. Microtubule and nuclear probes are visualized in red and blue respectively (where available).



### Western Blotting

**Image 2.** Western Blot analysis of U-251 cell lysate with HSP90B1 monoclonal antibody, clone CL2647 .



### Immunohistochemistry

**Image 3.** Immunohistochemical staining (Formalin-fixed paraffin-embedded sections) of human prostate with HSP90B1 monoclonal antibody, clone CL2647 shows strong cytoplasmic immunoreactivity in glandular cells.