

Datasheet for ABIN5650058

anti-Ly6k antibody**1** Image[Go to Product page](#)

Overview

Quantity:	100 µL
Target:	Ly6k
Reactivity:	Human
Host:	Mouse
Clonality:	Monoclonal
Conjugate:	This Ly6k antibody is un-conjugated
Application:	Immunohistochemistry (Paraffin-embedded Sections) (IHC (p))

Product Details

Purpose:	Mouse monoclonal antibody raised against partial recombinant human LY6K.
Immunogen:	Recombinant protein corresponding to human LY6K.
Sequence:	TDEGDNRVWC HVCERENTFE CQNPRRCKWT EPYCVIAAVK IFPRFFMVAK QCSAGCAAME RPKPEEKRFL LEEPMPFFYL KCCKIRYCNL EGPPINSSVF KEYAG
Clone:	CL2435
Isotype:	IgG2b
Cross-Reactivity:	Human

Target Details

Target:	Ly6k
Alternative Name:	LY6K (Ly6k Products)

Target Details

Background: Full Gene Name: lymphocyte antigen 6 complex, locus K
Synonyms: FLJ35226,HSJ001348

Gene ID: 54742

Application Details

Application Notes: Immunohistochemistry (Formalin/PFA-fixed paraffin-embedded sections) (1:200-1:500)
The optimal working dilution should be determined by the end user.

Restrictions: For Research Use only

Handling

Format: Liquid

Buffer: In PBS, pH 7.2 (40 % glycerol, 0.02 % sodium azide).

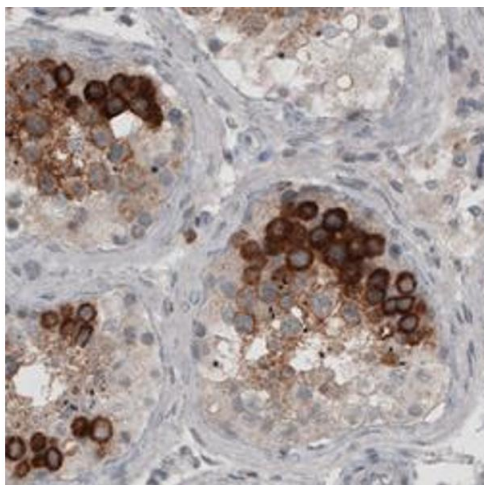
Preservative: Sodium azide

Precaution of Use: This product contains Sodium azide: a POISONOUS AND HAZARDOUS SUBSTANCE which should be handled by trained staff only.

Storage: 4 °C,-20 °C

Storage Comment: Store at 4°C. For long term storage store at -20°C.
Aliquot to avoid repeated freezing and thawing.

Images



Immunohistochemistry

Image 1. Immunohistochemical staining (Formalin-fixed paraffin-embedded sections) of human testis with LY6K monoclonal antibody, clone CL2435 shows strong cytoplasmic immunoreactivity in a subset of cells in seminiferous tubules.