

Datasheet for ABIN5650065
anti-MBP antibody



[Go to Product page](#)

2 Images

Overview

Quantity:	100 µL
Target:	MBP
Reactivity:	Human
Host:	Mouse
Clonality:	Monoclonal
Conjugate:	This MBP antibody is un-conjugated
Application:	Western Blotting (WB), Immunohistochemistry (Paraffin-embedded Sections) (IHC (p))

Product Details

Purpose:	Mouse monoclonal antibody raised against partial recombinant human MBP.
Immunogen:	Recombinant protein corresponding to human MBP.
Sequence:	DENPVVHFFK NIVTPRTPPP SQGKGRGLSL SRFSWGAEQG RPFYGYGGRA SDYKSAHKGF KGVDAQGTLK KIFKLGGRDS RSGSPM
Clone:	CL2819
Isotype:	IgG2a
Cross-Reactivity:	Human, Mouse, Rat

Target Details

Target:	MBP
Alternative Name:	Myelin basic protein (MBP Products)

Target Details

Background: Full Gene Name: myelin basic protein
Synonyms: MGC99675

Gene ID: 4155

UniProt: [P02686](#)

Application Details

Application Notes: Immunohistochemistry (Formalin/PFA-fixed paraffin-embedded sections) (1:5000-1:10000)
Western Blot (1:500-1:1000)
The optimal working dilution should be determined by the end user.

Restrictions: For Research Use only

Handling

Format: Liquid

Buffer: In PBS, pH 7.2 (40 % glycerol, 0.02 % sodium azide).

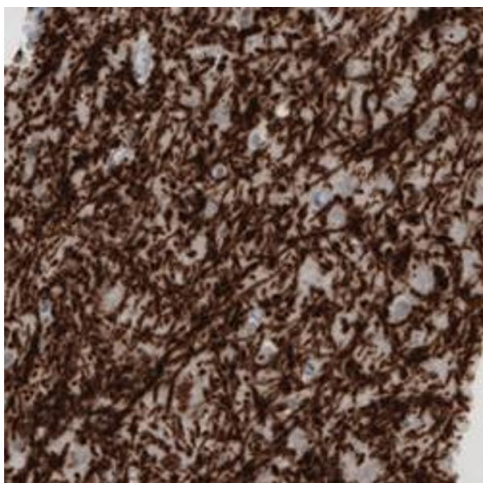
Preservative: Sodium azide

Precaution of Use: This product contains Sodium azide: a POISONOUS AND HAZARDOUS SUBSTANCE which should be handled by trained staff only.

Storage: 4 °C,-20 °C

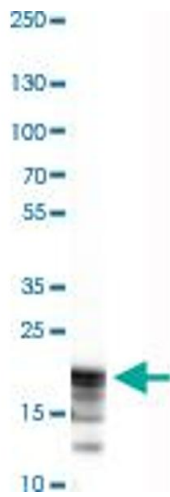
Storage Comment: Store at 4°C. For long term storage store at -20°C.
Aliquot to avoid repeated freezing and thawing.

Images



Immunohistochemistry

Image 1. Immunohistochemical staining (Formalin-fixed paraffin-embedded sections) of human cerebral cortex with MBP monoclonal antibody, clone CL2819 shows strong immunoreactivity in myelinated fibers.



Western Blotting

Image 2. Western Blot analysis of human cerebral cortex tissue lysate with MBP monoclonal antibody, clone CL2819 .