

Datasheet for ABIN5650072

**anti-METTL14 antibody****2** Images[Go to Product page](#)

## Overview

Quantity:	100 µL
Target:	METTL14
Reactivity:	Human
Host:	Mouse
Clonality:	Monoclonal
Conjugate:	This METTL14 antibody is un-conjugated
Application:	Western Blotting (WB), Immunohistochemistry (Paraffin-embedded Sections) (IHC (p))

## Product Details

Purpose:	Mouse monoclonal antibody raised against partial recombinant human METTL14.
Immunogen:	Recombinant protein corresponding to human METTL14.
Sequence:	RSWNMDSRLQ EIRERQKLRR QLLAQQLGAE SADSIGAVLN SKDEQREIAE TRETCRASYD TSAPNAKRKY LDEGETDEDK MEEYKDELEM QQDEE
Clone:	CL4252
Isotype:	IgG2a
Cross-Reactivity:	Human

## Target Details

Target:	METTL14
Alternative Name:	METTL14 ( <a href="#">METTL14 Products</a> )

## Target Details

Background: Full Gene Name: methyltransferase like 14  
Synonyms: hMETTL14

Gene ID: 57721

## Application Details

Application Notes: Immunohistochemistry (Formalin/PFA-fixed paraffin-embedded sections) (1:5000-1:10000)  
Western Blot (1:500-1:1000)  
The optimal working dilution should be determined by the end user.

Restrictions: For Research Use only

## Handling

Format: Liquid

Buffer: In PBS, pH 7.2 (40 % glycerol, 0.02 % sodium azide).

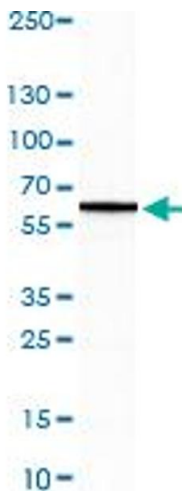
Preservative: Sodium azide

Precaution of Use: This product contains Sodium azide: a POISONOUS AND HAZARDOUS SUBSTANCE which should be handled by trained staff only.

Storage: 4 °C, -20 °C

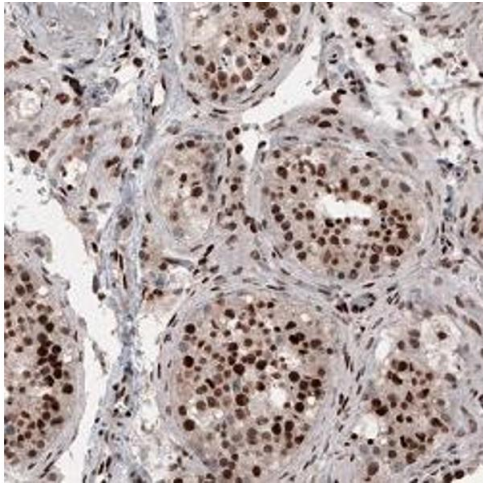
Storage Comment: Store at 4°C. For long term storage store at -20°C.  
Aliquot to avoid repeated freezing and thawing.

## Images



### Western Blotting

**Image 1.** Western Blot (Cell lysate) analysis of A-431 cell lysate.



### Immunohistochemistry

**Image 2.** Immunohistochemical staining (Formalin-fixed paraffin-embedded sections) of human testis shows strong nuclear positivity in cells in seminiferous tubules.