



[Go to Product page](#)

Datasheet for ABIN5650140
anti-PHGDH antibody

2 Images

Overview

Quantity:	100 µL
Target:	PHGDH
Reactivity:	Human
Host:	Mouse
Clonality:	Monoclonal
Conjugate:	This PHGDH antibody is un-conjugated
Application:	Western Blotting (WB), Immunohistochemistry (Paraffin-embedded Sections) (IHC (p))

Product Details

Purpose:	Mouse monoclonal antibody raised against partial recombinant human PHGDH.
Immunogen:	Recombinant protein corresponding to human PHGDH.
Sequence:	LEEIWPLCDF ITVHTPLLPS TTGLLNDNTF AQCKKGVVRVW NCARGGIVDE GALLRALQSG QCAGAALDVF TEEPPRDRAL VDHENVISCP HLGASTKEAQ SRCGEEIAVQ FVDM
Clone:	CL0555
Isotype:	IgG1
Cross-Reactivity:	Human

Target Details

Target:	PHGDH
Alternative Name:	PHGDH (PHGDH Products)

Target Details

Background:	Full Gene Name: phosphoglycerate dehydrogenase Synonyms: 3-PGDH,3PGDH,MGC3017,PDG,PGAD,PGD,PGDH,SERA
Gene ID:	26227
Pathways:	Metabolism of Steroid Hormones and Vitamin D, Warburg Effect

Application Details

Application Notes:	Immunohistochemistry (Formalin/PFA-fixed paraffin-embedded sections) (1:500-1:1000) Western Blot (1:500-1:1000) The optimal working dilution should be determined by the end user.
Restrictions:	For Research Use only

Handling

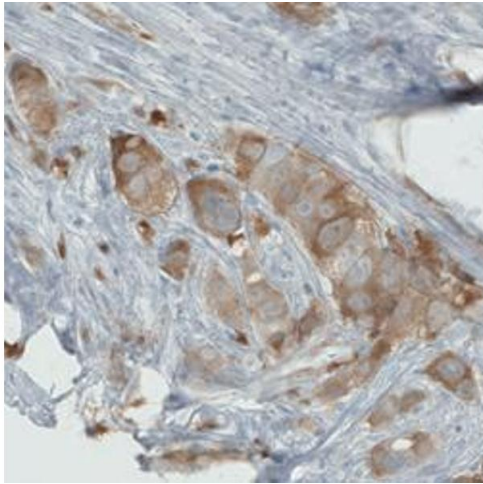
Format:	Liquid
Buffer:	In PBS, pH 7.2 (40 % glycerol, 0.02 % sodium azide).
Preservative:	Sodium azide
Precaution of Use:	This product contains Sodium azide: a POISONOUS AND HAZARDOUS SUBSTANCE which should be handled by trained staff only.
Storage:	4 °C,-20 °C
Storage Comment:	Store at 4°C. For long term storage store at -20°C. Aliquot to avoid repeated freezing and thawing.

Images



Western Blotting

Image 1. Western Blot analysis of RT-4 cell lysate with PHGDH monoclonal antibody, clone CL0555 .



Immunohistochemistry

Image 2. Immunohistochemical staining (Formalin-fixed paraffin-embedded sections) of human breast cancer with PHGDH monoclonal antibody, clone CL0555 shows moderate cytoplasmic immunoreactivity in tumor cells.