

Datasheet for ABIN5650175

anti-RBM3 antibody

3 Images

[Go to Product page](#)

Overview

Quantity:	100 µL
Target:	RBM3
Reactivity:	Human
Host:	Mouse
Clonality:	Monoclonal
Conjugate:	This RBM3 antibody is un-conjugated
Application:	Western Blotting (WB), Immunohistochemistry (Paraffin-embedded Sections) (IHC (p)), Immunofluorescence (IF)

Product Details

Purpose:	Mouse monoclonal antibody raised against partial recombinant human RBM3.
Immunogen:	Recombinant protein corresponding to human RBM3.
Sequence:	DEQALDHFS SFGPISEVVV VKDRETQRSR GFGFITFTNP EHASVAMRAM NGESLDGRQI RVDHAGKSAR GTRGGGFGAH GRGRSYSRGG GDQGYGSGRY YDSRPGGYGY GYGRSRDYNG RNQGGYDRYS GGNY
Clone:	CL0296
Isotype:	IgG1
Cross-Reactivity:	Human

Target Details

Target:	RBM3
---------	------

Target Details

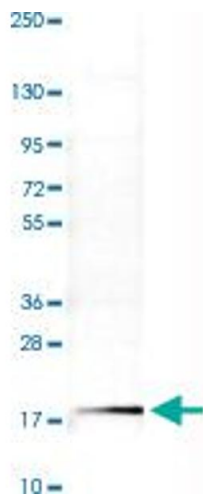
Alternative Name:	RBM3 (RBM3 Products)
Background:	Full Gene Name: RNA binding motif (RNP1, RRM) protein 3 Synonyms: IS1-RNPL,RNPL
Gene ID:	5935

Application Details

Application Notes:	Immunofluorescence (1-4 µg/mL) Immunohistochemistry (Formalin/PFA-fixed paraffin-embedded sections) (1:500-1:1000) Western Blot (1:500-1:1000) The optimal working dilution should be determined by the end user.
Restrictions:	For Research Use only

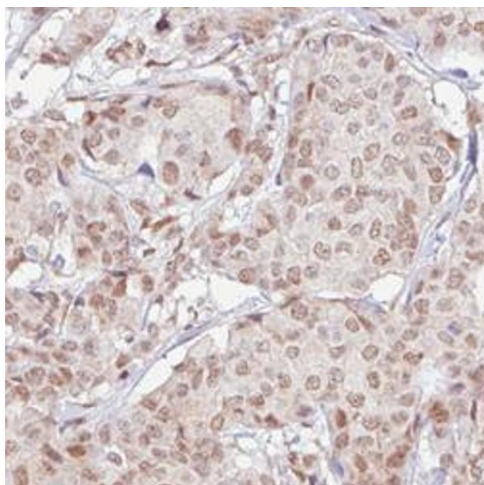
Handling

Format:	Liquid
Buffer:	In PBS, pH 7.2 (40 % glycerol, 0.02 % sodium azide).
Preservative:	Sodium azide
Precaution of Use:	This product contains Sodium azide: a POISONOUS AND HAZARDOUS SUBSTANCE which should be handled by trained staff only.
Storage:	4 °C,-20 °C
Storage Comment:	Store at 4°C. For long term storage store at -20°C. Aliquot to avoid repeated freezing and thawing.



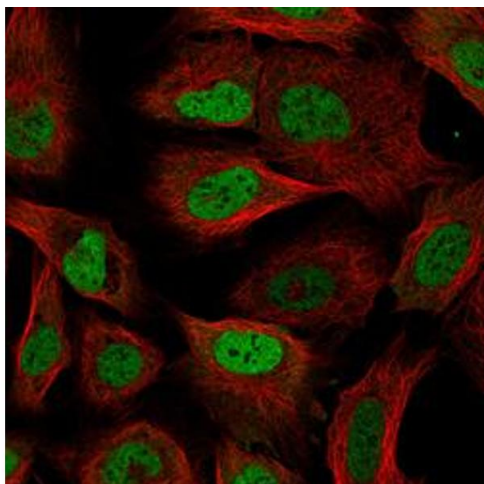
Western Blotting

Image 1. Western Blot analysis of RT-4 cell lysate with RBM3 monoclonal antibody, clone CL0296 .



Immunohistochemistry

Image 2. Immunohistochemical staining (Formalin-fixed paraffin-embedded sections) of human breast cancer with RBM3 monoclonal antibody, clone CL0296 shows moderate nuclear positivity in tumor cells.



Immunofluorescence

Image 3. Immunofluorescent staining of U-2 OS cells with RBM3 monoclonal antibody, clone CL0296 (Green) shows specific staining in the nucleoplasm. Microtubule and nuclear probes are visualized in red and blue, respectively (where available).