

Datasheet for ABIN5650180

anti-RHOT1 antibody**2** Images[Go to Product page](#)

Overview

Quantity:	100 µL
Target:	RHOT1
Reactivity:	Human
Host:	Mouse
Clonality:	Monoclonal
Conjugate:	This RHOT1 antibody is un-conjugated
Application:	Western Blotting (WB), Immunohistochemistry (Paraffin-embedded Sections) (IHC (p))

Product Details

Purpose:	Mouse monoclonal antibody raised against partial recombinant human RHOT1.
Immunogen:	Recombinant protein corresponding to human RHOT1.
Sequence:	THIVDYSEAE QSDEQLHQEI SQANVICIVY AVNNKHSIDK VTSRWIPLIN ERTDKDSRLP LILVGNKSDL VEYSSMETIL PIMNQYTEIE
Clone:	CL1083
Isotype:	IgG1
Cross-Reactivity:	Human

Target Details

Target:	RHOT1
Alternative Name:	RHOT1 (RHOT1 Products)

Target Details

Background: Full Gene Name: ras homolog gene family, member T1
Synonyms: ARHT1,FLJ11040,FLJ12633,MIRO-1

Gene ID: 55288

Application Details

Application Notes: Immunohistochemistry (Formalin/PFA-fixed paraffin-embedded sections) (1:200-1:500)
Western Blot (1:500-1:1000)
The optimal working dilution should be determined by the end user.

Restrictions: For Research Use only

Handling

Format: Liquid

Buffer: In PBS, pH 7.2 (40 % glycerol, 0.02 % sodium azide).

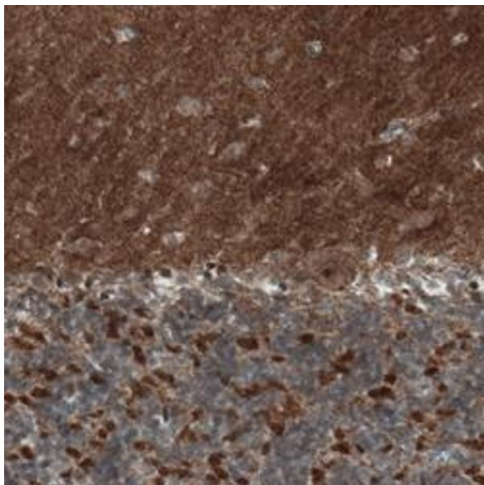
Preservative: Sodium azide

Precaution of Use: This product contains Sodium azide: a POISONOUS AND HAZARDOUS SUBSTANCE which should be handled by trained staff only.

Storage: 4 °C, -20 °C

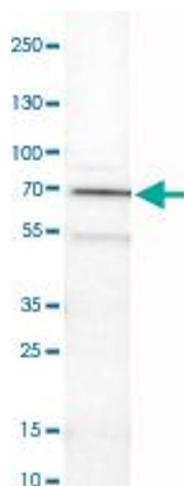
Storage Comment: Store at 4°C. For long term storage store at -20°C.
Aliquot to avoid repeated freezing and thawing.

Images



Immunohistochemistry

Image 1. Immunohistochemical staining (Formalin-fixed paraffin-embedded sections) of human cerebellum with RHOT1 monoclonal antibody, clone CL1083 shows strong positivity in neuropil of the molecular and granular cell layers, as well as in Purkinje cells.



Western Blotting

Image 2. Western Blot analysis of human cerebral cortex tissue lysate with RHOT1 monoclonal antibody, clone CL1083.