

Datasheet for ABIN5650184

**anti-RNASE7 antibody****2** Images[Go to Product page](#)

## Overview

Quantity:	100 µL
Target:	RNASE7
Reactivity:	Human
Host:	Mouse
Clonality:	Monoclonal
Conjugate:	This RNASE7 antibody is un-conjugated
Application:	Western Blotting (WB), Immunohistochemistry (Paraffin-embedded Sections) (IHC (p))

## Product Details

Purpose:	Mouse monoclonal antibody raised against partial recombinant human RNASE7.
Immunogen:	Recombinant protein corresponding to human RNASE7.
Sequence:	KGMTSSQWFK IQHMQPSPQA CNSAMKNINK HTKRCKDLNT FLHEPFSSVA ATCQTPKIAC KNGDKNCHQS HGPVSLTMCK LTSGKYPNCR YKEKRQNKSY VVACKPPQKK DSQQFHLVPV HLDRV
Clone:	CL0224
Isotype:	IgG2a
Cross-Reactivity:	Human

## Target Details

Target:	RNASE7
---------	--------

## Target Details

Alternative Name:	RNASE7 ( <a href="#">RNASE7 Products</a> )
Background:	Full Gene Name: ribonuclease, RNase A family, 7 Synonyms: MGC133220
Gene ID:	84659

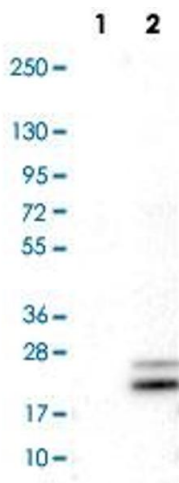
## Application Details

Application Notes:	Immunohistochemistry (Formalin/PFA-fixed paraffin-embedded sections) (1:50-1:200) Western Blot (1:500-1:1000) The optimal working dilution should be determined by the end user.
Restrictions:	For Research Use only

## Handling

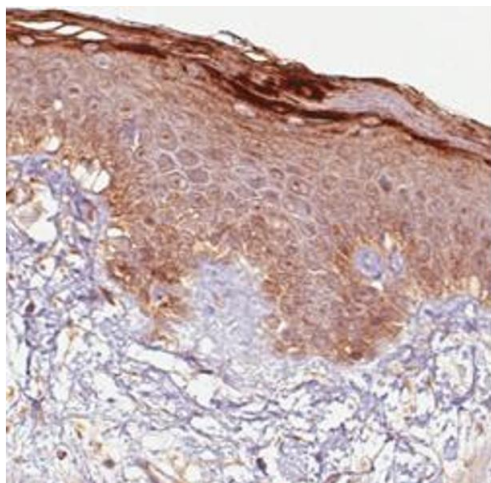
Format:	Liquid
Buffer:	In PBS, pH 7.2 (40 % glycerol, 0.02 % sodium azide).
Preservative:	Sodium azide
Precaution of Use:	This product contains Sodium azide: a POISONOUS AND HAZARDOUS SUBSTANCE which should be handled by trained staff only.
Storage:	4 °C,-20 °C
Storage Comment:	Store at 4°C. For long term storage store at -20°C. Aliquot to avoid repeated freezing and thawing.

## Images



### Western Blotting

**Image 1.** Western Blot analysis of Lane 1: negative control (vector only transfected HEK293T cell lysate) and Lane 2: over-expression lysate (co-expressed with a C-terminal myc-DDK tag in mammalian HEK293T cells) with RNASE7 monoclonal antibody, clone CL0224 .



#### Immunohistochemistry

**Image 2.** Immunohistochemical staining (Formalin-fixed paraffin-embedded sections) of human skin with RNASE7 monoclonal antibody, clone CL0224 shows immunoreactivity in keratinocytes, particularly strong in the outer layer.