

Datasheet for ABIN5650200
anti-SATB2 antibody



[Go to Product page](#)

2 Images

Overview

Quantity:	100 µL
Target:	SATB2
Reactivity:	Human
Host:	Mouse
Clonality:	Monoclonal
Conjugate:	This SATB2 antibody is un-conjugated
Application:	Western Blotting (WB), Immunohistochemistry (Paraffin-embedded Sections) (IHC (p))

Product Details

Purpose:	Mouse monoclonal antibody raised against partial recombinant human SATB2.
Immunogen:	Recombinant protein corresponding to human SATB2.
Sequence:	KECPLSQSMI SSIVNSTYYA NVSATKCQEF GRWYKYYKKI KVERVERENL SDYCVLGQRP MHLPMNMQLA SLGKTNEQSP HSQIHHSTPI RNQVPALQPI MSPGLLSPQL SPQLV
Clone:	CL0319
Isotype:	IgG2a
Cross-Reactivity:	Human, Rat

Target Details

Target:	SATB2
Alternative Name:	SATB2 (SATB2 Products)

Target Details

Background:	Full Gene Name: SATB homeobox 2 Synonyms: FLJ21474,FLJ32076,KIAA1034,MGC119474,MGC119477
Gene ID:	23314

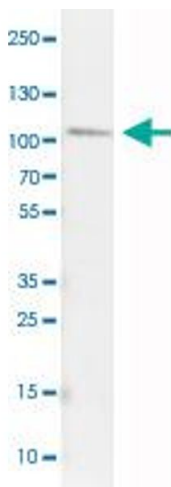
Application Details

Application Notes:	Immunohistochemistry (Formalin/PFA-fixed paraffin-embedded sections) (1:200-1:500) Western Blot (1:500-1:1000) The optimal working dilution should be determined by the end user.
Restrictions:	For Research Use only

Handling

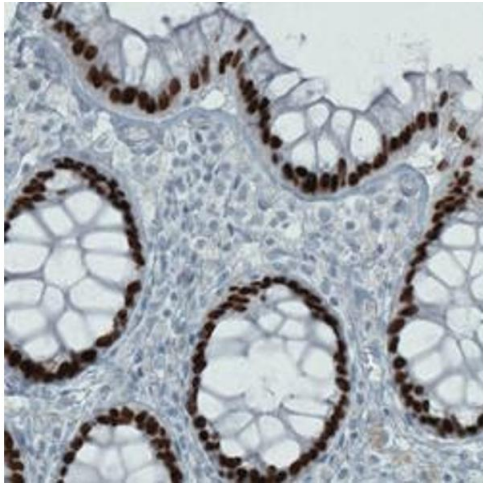
Format:	Liquid
Buffer:	In PBS, pH 7.2 (40 % glycerol, 0.02 % sodium azide).
Preservative:	Sodium azide
Precaution of Use:	This product contains Sodium azide: a POISONOUS AND HAZARDOUS SUBSTANCE which should be handled by trained staff only.
Storage:	4 °C, -20 °C
Storage Comment:	Store at 4°C. For long term storage store at -20°C. Aliquot to avoid repeated freezing and thawing.

Images



Western Blotting

Image 1. Western Blot analysis of HEL cell lysate with SATB2 monoclonal antibody, clone CL0319 .



Immunohistochemistry

Image 2. Immunohistochemical staining (Formalin-fixed paraffin-embedded sections) of human rectum with SATB2 monoclonal antibody, clone CL0319 shows strong nuclear positivity in glandular cells.