

Datasheet for ABIN5650219
anti-SIX Homeobox 1 antibody

3 Images

[Go to Product page](#)

Overview

Quantity:	100 µL
Target:	SIX Homeobox 1 (SIX1)
Reactivity:	Human
Host:	Mouse
Clonality:	Monoclonal
Conjugate:	This SIX Homeobox 1 antibody is un-conjugated
Application:	Western Blotting (WB), Immunofluorescence (IF), Immunohistochemistry (Paraffin-embedded Sections) (IHC (p))

Product Details

Purpose:	Mouse monoclonal antibody raised against partial recombinant human SIX1.
Immunogen:	Recombinant protein corresponding to human SIX1.
Sequence:	CFKEKSRGVL REWYAHNPYP SPREKRELAE ATGLTTTQVS NWFKNRRQRD RAAEAKEREN TENNNSSSNK QNQLSPLEGG KPLMSSSEEE FSPPQSPDQN SVLLLQGNMG HARSSNYSLP GLTASQPSHG LQTHQHQLQD S
Clone:	CL0185
Isotype:	IgG1
Cross-Reactivity:	Human

Target Details

Target:	SIX Homeobox 1 (SIX1)
---------	-----------------------

Target Details

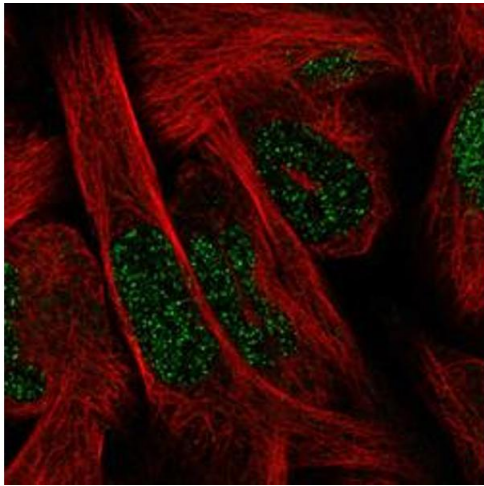
Alternative Name:	SIX1 (SIX1 Products)
Background:	Full Gene Name: SIX homeobox 1 Synonyms: BOS3,DFNA23,TIP39
Gene ID:	6495
Pathways:	Sensory Perception of Sound , Regulation of Muscle Cell Differentiation , Tube Formation , Skeletal Muscle Fiber Development

Application Details

Application Notes:	Immunofluorescence (1-4 µg/mL) Immunohistochemistry (Formalin/PFA-fixed paraffin-embedded sections) (1:200-1:500) Western Blot (1:500-1:1000) The optimal working dilution should be determined by the end user.
Restrictions:	For Research Use only

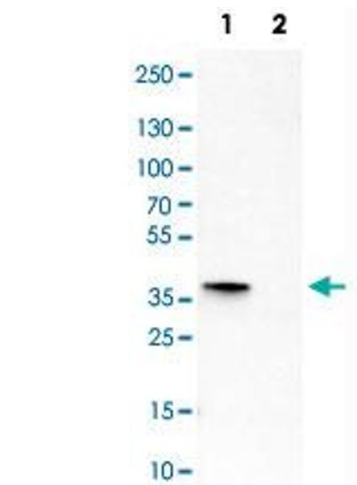
Handling

Format:	Liquid
Buffer:	In PBS, pH 7.2 (40 % glycerol, 0.02 % sodium azide).
Preservative:	Sodium azide
Precaution of Use:	This product contains Sodium azide: a POISONOUS AND HAZARDOUS SUBSTANCE which should be handled by trained staff only.
Storage:	4 °C,-20 °C
Storage Comment:	Store at 4°C. For long term storage store at -20°C. Aliquot to avoid repeated freezing and thawing.



Immunofluorescence

Image 1. Immunofluorescent staining of RH30 cells with SIX1 monoclonal antibody, clone CL0185 (Green) shows spotty nuclear. Microtubule probes are visualized in red (where available).



Western Blotting

Image 2. Western Blot analysis of Lane 1: RH-30 and Lane 2: CACO-2 cell lysates with SIX1 monoclonal antibody, clone CL0185 .



Immunohistochemistry

Image 3. Immunohistochemical staining (Formalin-fixed paraffin-embedded sections) of human striated muscle with SIX1 monoclonal antibody, clone CL0185 shows strong nuclear immunoreactivity in the myocytes.