

Datasheet for ABIN5650221

anti-SLC17A7 antibody**2** Images[Go to Product page](#)

Overview

Quantity:	100 µL
Target:	SLC17A7
Reactivity:	Human
Host:	Mouse
Clonality:	Monoclonal
Conjugate:	This SLC17A7 antibody is un-conjugated
Application:	Western Blotting (WB), Immunohistochemistry (Paraffin-embedded Sections) (IHC (p))

Product Details

Purpose:	Mouse monoclonal antibody raised against partial recombinant human SLC17A7.
Immunogen:	Recombinant protein corresponding to human SLC17A7.
Sequence:	PSISEEERKY IEDAIGESAK LMNPLTKFST P
Clone:	CL2754
Isotype:	IgG2b
Cross-Reactivity:	Human, Mouse, Rat

Target Details

Target:	SLC17A7
Alternative Name:	SLC17A7 (SLC17A7 Products)
Background:	Full Gene Name: solute carrier family 17 (sodium-dependent inorganic phosphate

Target Details

	cotransporter), member 7 Synonyms: BNPI,VGLUT1
Gene ID:	57030

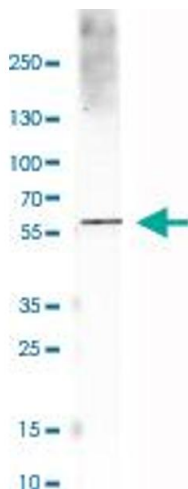
Application Details

Application Notes:	Immunohistochemistry (Formalin/PFA-fixed paraffin-embedded sections) (1:5000-1:10000) Western Blot (1:500-1:1000) The optimal working dilution should be determined by the end user.
Restrictions:	For Research Use only

Handling

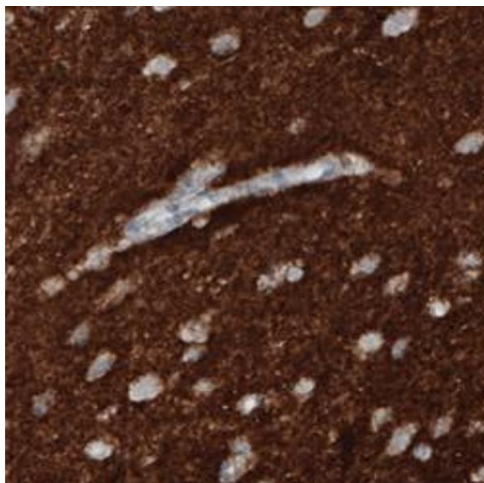
Format:	Liquid
Buffer:	In PBS, pH 7.2 (40 % glycerol, 0.02 % sodium azide).
Preservative:	Sodium azide
Precaution of Use:	This product contains Sodium azide: a POISONOUS AND HAZARDOUS SUBSTANCE which should be handled by trained staff only.
Storage:	4 °C, -20 °C
Storage Comment:	Store at 4°C. For long term storage store at -20°C. Aliquot to avoid repeated freezing and thawing.

Images



Western Blotting

Image 1. Western Blot analysis of human cerebral cortex tissue lysate with SLC17A7 monoclonal antibody, clone CL2754 .



Immunohistochemistry

Image 2. Immunohistochemical staining (Formalin-fixed paraffin-embedded sections) of human cerebral cortex with SLC17A7 monoclonal antibody, clone CL2754 shows strong immunoreactivity in neuropil.