

Datasheet for ABIN5650225

anti-SLC22A2 antibody[Go to Product page](#)**1** Image

Overview

Quantity:	100 µL
Target:	SLC22A2
Reactivity:	Human
Host:	Mouse
Clonality:	Monoclonal
Conjugate:	This SLC22A2 antibody is un-conjugated
Application:	Immunohistochemistry (Paraffin-embedded Sections) (IHC (p))

Product Details

Purpose:	Mouse monoclonal antibody raised against partial recombinant human SLC22A2.
Immunogen:	Recombinant protein corresponding to human SLC22A2.
Sequence:	ESPRWLISQN KNAEAMRIIK HIAKKNGKSL PASLQRLRL EETGKKLNPS FLDLVRTPQI R
Clone:	CL0631
Isotype:	IgG2b
Cross-Reactivity:	Human

Target Details

Target:	SLC22A2
Alternative Name:	SLC22A2 (SLC22A2 Products)
Background:	Full Gene Name: solute carrier family 22 (organic cation transporter), member 2

Target Details

	Synonyms: MGC32628,OCT2
Gene ID:	6582

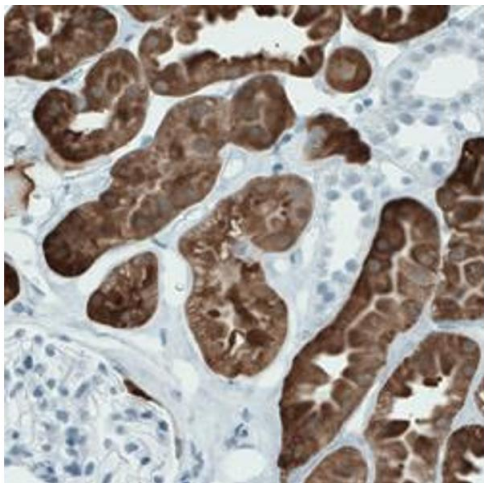
Application Details

Application Notes:	Immunohistochemistry (Formalin/PFA-fixed paraffin-embedded sections) (1:500-1:1000) The optimal working dilution should be determined by the end user.
Restrictions:	For Research Use only

Handling

Format:	Liquid
Buffer:	In PBS, pH 7.2 (40 % glycerol, 0.02 % sodium azide).
Preservative:	Sodium azide
Precaution of Use:	This product contains Sodium azide: a POISONOUS AND HAZARDOUS SUBSTANCE which should be handled by trained staff only.
Storage:	4 °C,-20 °C
Storage Comment:	Store at 4°C. For long term storage store at -20°C. Aliquot to avoid repeated freezing and thawing.

Images



Immunohistochemistry

Image 1. Immunohistochemical staining (Formalin-fixed paraffin-embedded sections) of human kidney with SLC22A2 monoclonal antibody, clone CL0631 shows strong immunoreactivity in renal tubules.