



[Go to Product page](#)

Datasheet for ABIN5650269

anti-CD90 antibody

2 Images

Overview

Quantity:	100 µL
Target:	CD90 (THY1)
Reactivity:	Human
Host:	Mouse
Clonality:	Monoclonal
Conjugate:	This CD90 antibody is un-conjugated
Application:	Western Blotting (WB), Immunohistochemistry (Paraffin-embedded Sections) (IHC (p))

Product Details

Purpose:	Mouse monoclonal antibody raised against partial recombinant human THY1.
Immunogen:	Recombinant protein corresponding to human THY1.
Sequence:	VTSLTACLVD QSLRLDCRHE NTSSSPIQYE FSLTRETKKH VLFGLTVGVPE HTYRSRTNFT SKYNMKVLYL SAFTSKDEGT YTCALHHS GH SPPISSQNV T VLRDKLVKCE GISLLAQNTS WL
Clone:	CL1028
Isotype:	IgG2b
Cross-Reactivity:	Human

Target Details

Target:	CD90 (THY1)
Alternative Name:	THY1 (THY1 Products)

Target Details

Background: Full Gene Name: Thy-1 cell surface antigen
Synonyms: CD90,FLJ33325

Gene ID: 7070

Pathways: [Cell-Cell Junction Organization](#)

Application Details

Application Notes: Immunohistochemistry (Formalin/PFA-fixed paraffin-embedded sections) (1:2500-1:5000)
Western Blot (1:500-1:1000)
The optimal working dilution should be determined by the end user.

Restrictions: For Research Use only

Handling

Format: Liquid

Buffer: In PBS, pH 7.2 (40 % glycerol, 0.02 % sodium azide).

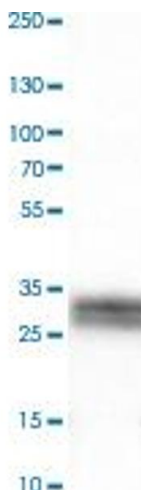
Preservative: Sodium azide

Precaution of Use: This product contains Sodium azide: a POISONOUS AND HAZARDOUS SUBSTANCE which should be handled by trained staff only.

Storage: 4 °C,-20 °C

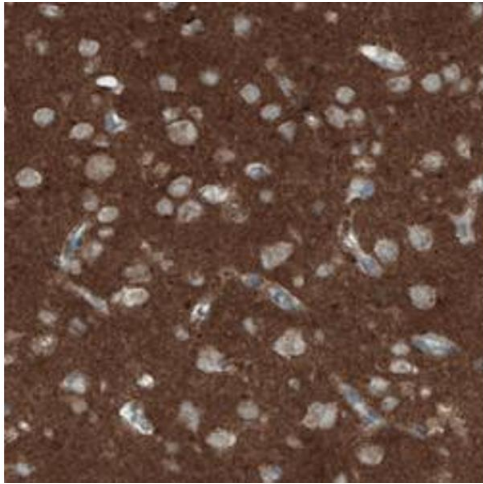
Storage Comment: Store at 4°C. For long term storage store at -20°C.
Aliquot to avoid repeated freezing and thawing.

Images



Western Blotting

Image 1. Western Blot analysis of human cerebral cortex tissue lysate with THY1 monoclonal antibody, clone CL1028



Immunohistochemistry

Image 2. Immunohistochemical staining (Formalin-fixed paraffin-embedded sections) of human cerebral cortex with THY1 monoclonal antibody, clone CL1028 shows strong immunoreactivity in neuropil.