

Datasheet for ABIN5650310

anti-VPS26A antibody**3** Images[Go to Product page](#)

Overview

Quantity:	100 µL
Target:	VPS26A
Reactivity:	Human
Host:	Mouse
Clonality:	Monoclonal
Conjugate:	This VPS26A antibody is un-conjugated
Application:	Western Blotting (WB), Immunofluorescence (IF), Immunohistochemistry (Paraffin-embedded Sections) (IHC (p))

Product Details

Purpose:	Mouse monoclonal antibody raised against partial recombinant human VPS26A.
Immunogen:	Recombinant protein corresponding to human VPS26A.
Sequence:	LRKQRTNFIHQ RFESPESQAS AEQPEM
Clone:	CL2287
Isotype:	IgG1
Cross-Reactivity:	Human

Target Details

Target:	VPS26A
Alternative Name:	VPS26A (VPS26A Products)

Target Details

Background: Full Gene Name: vacuolar protein sorting 26 homolog A (S. pombe)
Synonyms: FLJ12930,HB58,Hbeta58,PEP8A,VPS26

Gene ID: 9559

Application Details

Application Notes: Immunofluorescence (1-4 µg/mL)
Immunohistochemistry (Formalin/PFA-fixed paraffin-embedded sections) (1:200-1:500)
Western Blot (1:200-1:500)
The optimal working dilution should be determined by the end user.

Restrictions: For Research Use only

Handling

Format: Liquid

Buffer: In PBS, pH 7.2 (40 % glycerol, 0.02 % sodium azide).

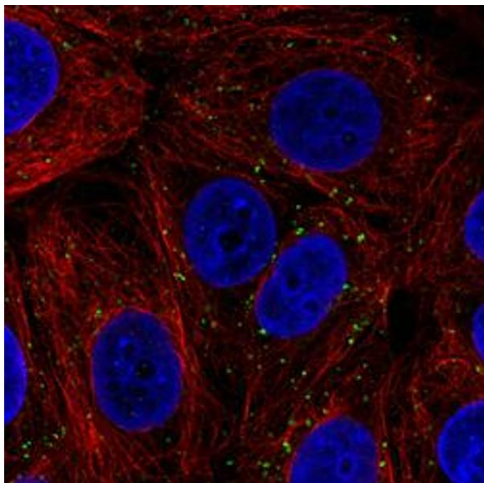
Preservative: Sodium azide

Precaution of Use: This product contains Sodium azide: a POISONOUS AND HAZARDOUS SUBSTANCE which should be handled by trained staff only.

Storage: 4 °C,-20 °C

Storage Comment: Store at 4°C. For long term storage store at -20°C.
Aliquot to avoid repeated freezing and thawing.

Images



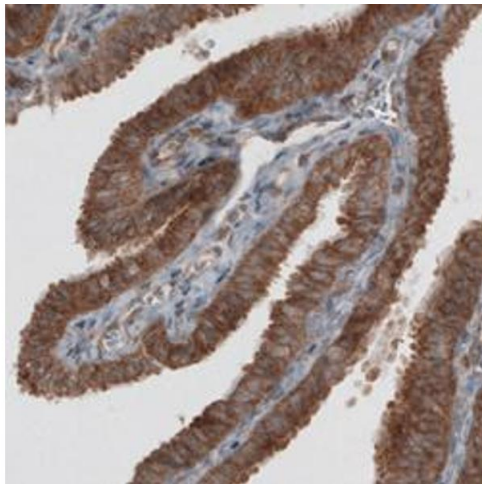
Immunofluorescence

Image 1. Immunofluorescent staining of MCF7 cells with VPS26A monoclonal antibody, clone CL2287 (Green) shows distinct endosomes. Microtubule and nuclear probes are visualized in red and blue respectively (where available).



Western Blotting

Image 2. Western Blot analysis of U-251 MG cell lysate with VPS26A monoclonal antibody, clone CL2287 .



Immunohistochemistry

Image 3. Immunohistochemical staining (Formalin-fixed paraffin-embedded sections) of human fallopian tube with VPS26A monoclonal antibody, clone CL2287 shows strong granular cytoplasmic immunoreactivity in glandular epithelium cells.