



[Go to Product page](#)

Datasheet for ABIN565066
anti-ATP13A2 antibody (AA 68-154)

1 Image

Overview

Quantity:	50 µL
Target:	ATP13A2
Binding Specificity:	AA 68-154
Reactivity:	Human
Host:	Mouse
Clonality:	Polyclonal
Conjugate:	This ATP13A2 antibody is un-conjugated
Application:	Western Blotting (WB), ELISA

Product Details

Purpose:	Mouse polyclonal antibody raised against a partial recombinant ATP13A2.
Immunogen:	ATP13A2 (NP_071372, 68 a.a. ~ 154 a.a) partial recombinant protein with GST tag.
Sequence:	KPLWGVRLRL RPCNLHAET LVIEIRDKED SSWQLFTVQV QTEAIGEGSL EPSPQSAED GRSQAAVGAV PEGAWKDTAQ LHKSEEA
Cross-Reactivity:	Human
Characteristics:	Antibody Reactive Against Recombinant Protein.

Target Details

Target:	ATP13A2
Alternative Name:	ATP13A2 (ATP13A2 Products)

Target Details

Background:	Full Gene Name: ATPase type 13A2 Synonyms: FLJ26510,HSA9947,KRPPD,PARK9
Gene ID:	23400
NCBI Accession:	NM_022089
Pathways:	Ribonucleoside Biosynthetic Process

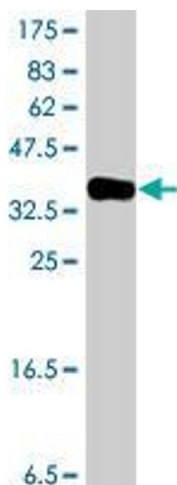
Application Details

Application Notes:	Optimal working dilution should be determined by the investigator.
Restrictions:	For Research Use only

Handling

Format:	Liquid
Buffer:	50 % glycerol
Handling Advice:	Aliquot to avoid repeated freezing and thawing.
Storage:	-20 °C
Storage Comment:	Store at -20°C or lower. Aliquot to avoid repeated freezing and thawing.

Images



Western Blotting

Image 1. Western Blot detection against Immunogen (35.68 KDa) .