



[Go to Product page](#)

Datasheet for ABIN565069

anti-COTL1 antibody (AA 1-100)

1 Image

Overview

Quantity:	50 µL
Target:	COTL1
Binding Specificity:	AA 1-100
Reactivity:	Human
Host:	Mouse
Clonality:	Polyclonal
Conjugate:	This COTL1 antibody is un-conjugated
Application:	Western Blotting (WB), ELISA

Product Details

Purpose:	Mouse polyclonal antibody raised against a partial recombinant COTL1.
Immunogen:	COTL1 (NP_066972, 1 a.a. ~ 100 a.a) partial recombinant protein with GST tag.
Sequence:	MATKIDKEAC RAAYNLVRDD GSAVIWVTFK YDGSTIVPGE QGAEYQHFIQ QCTDDVRLFA FVRFTTGDAM SKRSKFALIT WIGENVSLQ RAKTGTDKTL
Cross-Reactivity:	Human
Characteristics:	Antibody Reactive Against Recombinant Protein.

Target Details

Target:	COTL1
Alternative Name:	COTL1 (COTL1 Products)

Target Details

Background: Full Gene Name: coactosin-like 1 (Dictyostelium)
Synonyms: CLP,FLJ43657,MGC19733

Gene ID: 23406

NCBI Accession: [NM_021149](#)

Application Details

Application Notes: Optimal working dilution should be determined by the investigator.

Restrictions: For Research Use only

Handling

Format: Liquid

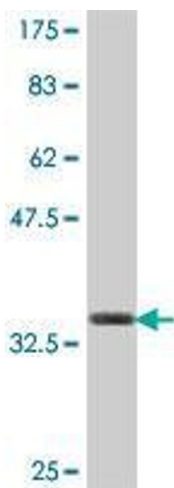
Buffer: 50 % glycerol

Handling Advice: Aliquot to avoid repeated freezing and thawing.

Storage: -20 °C

Storage Comment: Store at -20°C or lower. Aliquot to avoid repeated freezing and thawing.

Images



Western Blotting

Image 1. Western Blot detection against Immunogen (37.11 kDa).