



[Go to Product page](#)

Datasheet for ABIN5650812

## anti-Cyclin D2 antibody (AA 189-289) (Atto 390)

### 2 Images

#### Overview

Quantity:	100 µg
Target:	Cyclin D2 (CCND2)
Binding Specificity:	AA 189-289
Reactivity:	Human
Host:	Rabbit
Clonality:	Polyclonal
Conjugate:	This Cyclin D2 antibody is conjugated to Atto 390
Application:	Western Blotting (WB), Immunohistochemistry (IHC)

#### Product Details

Immunogen:	Synthetic peptide from the C-terminal of Human Cyclin D2 (189-289 aa), conjugated to Keyhole Limpet Haemocyanin (KLH).
Specificity:	Detects 33 kDa, ~50 kDa band is due to post translational modifications.
Purification:	Peptide Affinity Purified

#### Target Details

Target:	Cyclin D2 (CCND2)
Alternative Name:	Cyclin D2 ( <a href="#">CCND2 Products</a> )
Gene ID:	894
NCBI Accession:	<a href="#">NP_001750</a>

## Target Details

UniProt: [P30279](#)

Pathways: [Cell Division Cycle, Mitotic G1-G1/S Phases](#)

## Application Details

Application Notes:

- WB (1:1000)
- IHC (1:50)
- optimal dilutions for assays should be determined by the user.

Comment: A 1:1000 dilution of ABIN5650812 was sufficient for detection of Cyclin D2 in 15 µg of human HeLa cell lysates by ECL immunoblot analysis using goat anti-rabbit IgG:HRP as the secondary antibody.

Restrictions: For Research Use only

## Handling

Format: Liquid

Concentration: 1 mg/mL

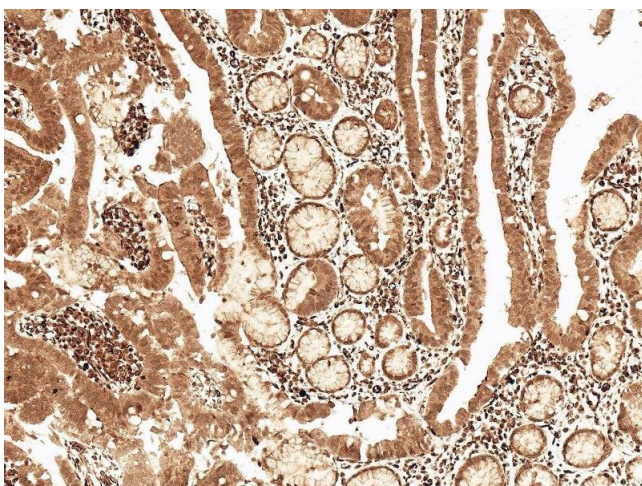
Buffer: PBS pH 7.4, 50 % glycerol, 0.09 % Sodium Azide

Preservative: Sodium azide

Precaution of Use: This product contains Sodium azide: a POISONOUS AND HAZARDOUS SUBSTANCE, which should be handled by trained staff only.

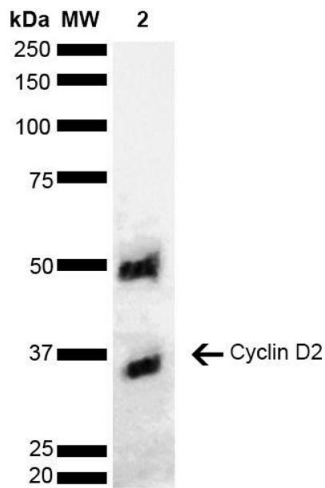
Storage: -20 °C

## Images



### Immunohistochemistry

**Image 1.** Immunohistochemistry analysis using Rabbit Anti-Cyclin D2 Polyclonal Antibody (ABIN5650812). Tissue: Stomach. Species: Human. Fixation: Formalin Fixed Paraffin-Embedded. Primary Antibody: Rabbit Anti-Cyclin D2 Polyclonal Antibody (ABIN5650812) at 1:50 for 30 min at RT. Counterstain: Hematoxylin. Magnification: 10X. HRP-DAB Detection.



### Western Blotting

**Image 2.** Western blot analysis of Human Cervical cancer cell line (HeLa) lysate showing detection of ~33.1 kDa Cyclin D2 protein using Rabbit Anti-Cyclin D2 Polyclonal Antibody (ABIN5650812). Lane 1: Molecular Weight Ladder (MW). Lane 2: Cervical Cancer cell line (HeLa) lysate. Load: 10 µg. Block: 5 % Skim Milk in 1X TBST. Primary Antibody: Rabbit Anti-Cyclin D2 Polyclonal Antibody (ABIN5650812) at 1:1000 for 2 hours at RT. Secondary Antibody: Goat Anti-Rabbit HRP:IgG at 1:3000 for 1 hour at RT. Color Development: ECL solution for 5 min at RT. Predicted/Observed Size: ~33.1 kDa. Other Band(s): ~50 kDa due to post translational modifications.