



[Go to Product page](#)

Datasheet for ABIN565084

## anti-SLC35A3 antibody (AA 61-113)

### 2 Images

#### Overview

Quantity:	50 µL
Target:	SLC35A3
Binding Specificity:	AA 61-113
Reactivity:	Human
Host:	Mouse
Clonality:	Polyclonal
Conjugate:	This SLC35A3 antibody is un-conjugated
Application:	Western Blotting (WB), ELISA

#### Product Details

Purpose:	Mouse polyclonal antibody raised against a partial recombinant SLC35A3.
Immunogen:	SLC35A3 (NP_036375, 61 a.a. ~ 113 a.a) partial recombinant protein with GST tag.
Sequence:	DSKCSLRALN RVLHDEILNK PMETLKLAIP SGIYTLQNNL LYVALSNLDA ATY
Cross-Reactivity:	Human
Characteristics:	Antibody Reactive Against Recombinant Protein.

#### Target Details

Target:	SLC35A3
Alternative Name:	SLC35A3 ( <a href="#">SLC35A3 Products</a> )
Background:	Full Gene Name: solute carrier family 35 (UDP-N-acetylglucosamine (UDP-GlcNAc) transporter),

## Target Details

member A3

Synonyms: DKFZp781P1297

Gene ID: 23443

NCBI Accession: [NM\\_012243](#)

## Application Details

Application Notes: Optimal working dilution should be determined by the investigator.

Restrictions: For Research Use only

## Handling

Format: Liquid

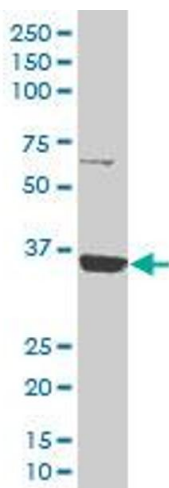
Buffer: 50 % glycerol

Handling Advice: Aliquot to avoid repeated freezing and thawing.

Storage: -20 °C

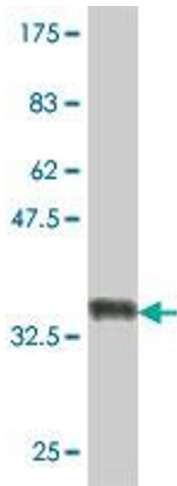
Storage Comment: Store at -20°C or lower. Aliquot to avoid repeated freezing and thawing.

## Images



### Western Blotting

**Image 1.** SLC35A3 polyclonal antibody (A01), Lot # 060707JCS1 Western Blot analysis of SLC35A3 expression in K-562 .



### Western Blotting

**Image 2.** Western Blot detection against Immunogen (31.94 kDa).