



[Go to Product page](#)

Datasheet for ABIN5650893

## anti-Presenilin 1 antibody (AA 100-200) (Biotin)

### 2 Images

#### Overview

Quantity:	100 µg
Target:	Presenilin 1 (PSEN1)
Binding Specificity:	AA 100-200
Reactivity:	Human, Mouse, Rat
Host:	Rabbit
Clonality:	Polyclonal
Conjugate:	This Presenilin 1 antibody is conjugated to Biotin
Application:	Western Blotting (WB), Immunohistochemistry (IHC)

#### Product Details

Immunogen:	Synthetic peptide of Human Presenilin 1 (100-200 aa), conjugated to Keyhole Limpet Haemocyanin (KLH).
Specificity:	Detects 52.7 kDa. 28, 32, 42 kDa bands are other isoforms.
Purification:	Peptide Affinity Purified

#### Target Details

Target:	Presenilin 1 (PSEN1)
Alternative Name:	Presenilin 1 ( <a href="#">PSEN1 Products</a> )
Gene ID:	5663
NCBI Accession:	<a href="#">NP_000012</a>

## Target Details

---

UniProt: [P49768](#)

Pathways: [Notch Signaling](#), [EGFR Signaling Pathway](#), [Synaptic Vesicle Exocytosis](#), [Dicarboxylic Acid Transport](#)

## Application Details

---

Application Notes:

- WB (1:1000)
- IHC (1:50)
- optimal dilutions for assays should be determined by the user.

Comment: A 1:1000 dilution of ABIN5650893 was sufficient for detection of Presenilin 1 in 15 µg of mouse liver cell lysates by ECL immunoblot analysis using goat anti-rabbit IgG:HRP as the secondary antibody.

Restrictions: For Research Use only

## Handling

---

Format: Liquid

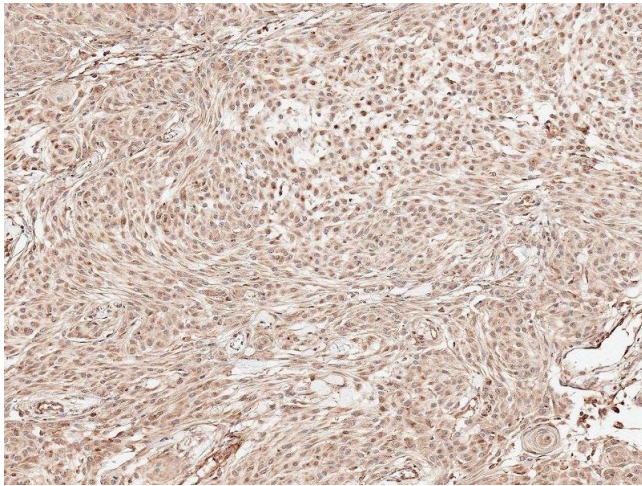
Concentration: 1 mg/mL

Buffer: PBS pH 7.4, 50 % glycerol, 0.09 % Sodium Azide

Preservative: Sodium azide

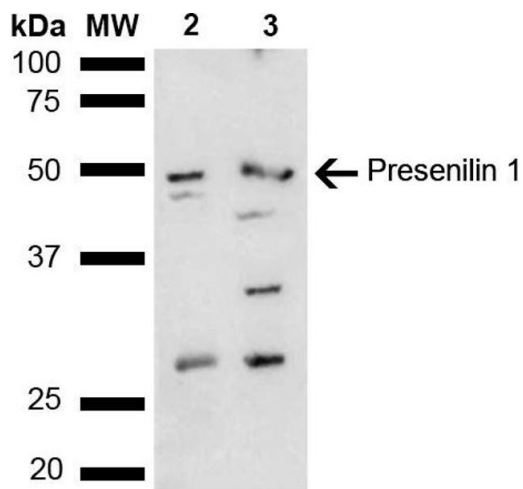
Precaution of Use: This product contains Sodium azide: a POISONOUS AND HAZARDOUS SUBSTANCE, which should be handled by trained staff only.

Storage: -20 °C



### Immunohistochemistry

**Image 1.** Immunohistochemistry analysis using Rabbit Anti-Presenilin 1 Polyclonal Antibody (ABIN5650893). Tissue: Brain. Species: Human. Fixation: Formalin Fixed Paraffin-Embedded. Primary Antibody: Rabbit Anti-Presenilin 1 Polyclonal Antibody (ABIN5650893) at 1:50 for 30 min at RT. Counterstain: Hematoxylin. Magnification: 10X.



### Western Blotting

**Image 2.** Western blot analysis of Mouse, Rat liver lysate showing detection of ~52.7 kDa Presenilin 1 protein using Rabbit Anti-Presenilin 1 Polyclonal Antibody (ABIN5650893). Lane 1: Molecular Weight Ladder (MW). Lane 2: Mouse liver lysate. Lane 3: Rat liver lysate. Load: 15 µg. Block: 5 % Skim Milk in 1X TBST. Primary Antibody: Rabbit Anti-Presenilin 1 Polyclonal Antibody (ABIN5650893) at 1:1000 for 2 hours at RT. Secondary Antibody: Goat Anti-Rabbit HRP:IgG at 1:4000 for 1 hour at RT. Color Development: ECL solution for 5 min at RT. Predicted/Observed Size: ~52.7 kDa. Other Band(s): 28, 32, 42 kDa other isoforms.