

Datasheet for ABIN5650920
anti-TCF4 antibody (AA 500-600) (Atto 390)



[Go to Product page](#)

2 Images

Overview

Quantity:	100 µg
Target:	TCF4
Binding Specificity:	AA 500-600
Reactivity:	Human
Host:	Rabbit
Clonality:	Polyclonal
Conjugate:	This TCF4 antibody is conjugated to Atto 390
Application:	Western Blotting (WB), Immunohistochemistry (IHC)

Product Details

Immunogen:	Synthetic peptide from the C-terminal of Human TCF4 (500-600 aa), conjugated to Keyhole Limpet Haemocyanin (KLH).
Specificity:	Expressed in adult heart, brain, placenta, skeletal muscle and to a lesser extent in the lung. In developing embryonic tissues, expression mostly occurs in the brain., Detects 71 kDa, 45 kDa. 45 kDa band represents a different isoform .
Cross-Reactivity:	Human, Mouse
Purification:	Peptide Affinity Purified

Target Details

Target:	TCF4
Alternative Name:	TCF4 (TCF4 Products)

Target Details

Gene ID: 6925

NCBI Accession: [NP_001077431](#)

UniProt: [P15884](#)

Pathways: [WNT Signaling](#), [Positive Regulation of Peptide Hormone Secretion](#), [Peptide Hormone Metabolism](#), [Regulation of Hormone Metabolic Process](#), [Carbohydrate Homeostasis](#), [Stem Cell Maintenance](#), [Protein targeting to Nucleus](#)

Application Details

Application Notes:

- WB (1:1000)
- IHC (1:50)
- optimal dilutions for assays should be determined by the user.

Comment: A 1:1000 dilution of ABIN5650920 was sufficient for detection of TCF4 in 15 µg of mouse liver cell lysates by ECL immunoblot analysis using goat anti-rabbit IgG:HRP as the secondary antibody.

Restrictions: For Research Use only

Handling

Format: Liquid

Concentration: 1 mg/mL

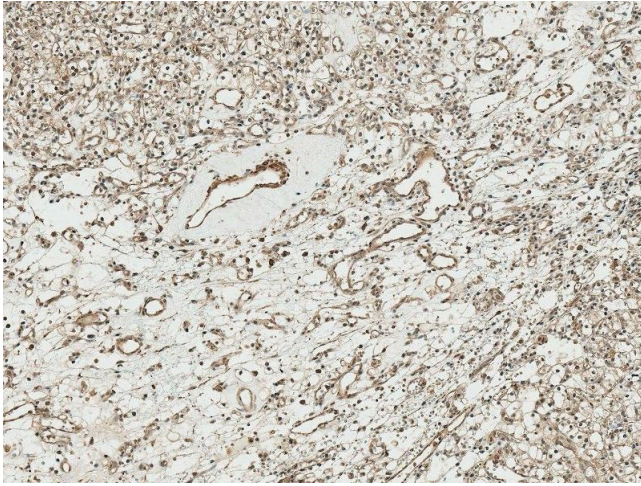
Buffer: PBS pH 7.4, 50 % glycerol, 0.09 % sodium azide, Storage buffer may change when conjugated

Preservative: Sodium azide

Precaution of Use: This product contains Sodium azide: a POISONOUS AND HAZARDOUS SUBSTANCE which should be handled by trained staff only.

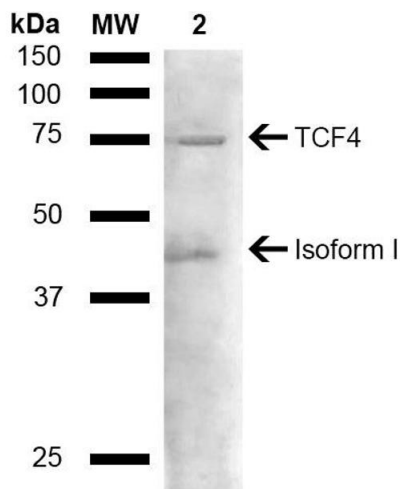
Storage: 4 °C

Storage Comment: Conjugated antibodies should be stored at 4°C



Immunohistochemistry

Image 1. Immunohistochemistry analysis using Rabbit Anti-TCF4 Polyclonal Antibody (ABIN5650920). Tissue: Kidney. Species: Human. Fixation: Formalin Fixed Paraffin-Embedded. Primary Antibody: Rabbit Anti-TCF4 Polyclonal Antibody (ABIN5650920) at 1:50 for 30 min at RT. Counterstain: Hematoxylin. Magnification: 10X. HRP-DAB Detection.



Western Blotting

Image 2. Western blot analysis of Mouse liver lysate showing detection of ~71.3 kDa TCF4 protein using Rabbit Anti-TCF4 Polyclonal Antibody (ABIN5650920). Lane 1: Molecular Weight Ladder (MW). Lane 2: Mouse liver lysate. Load: 15 µg. Block: 5 % Skim Milk in 1X TBST. Primary Antibody: Rabbit Anti-TCF4 Polyclonal Antibody (ABIN5650920) at 1:1000 for 2 hours at RT. Secondary Antibody: Goat Anti-Rabbit HRP:IgG at 1:3000 for 1 hour at RT. Color Development: ECL solution for 5 min at RT. Predicted/Observed Size: ~71.3 kDa. Other Band(s): ~45 kDa isoform.