

Datasheet for ABIN5651047

anti-NFATC1 antibody (AA 110-210) (Atto 488)[Go to Product page](#)**2** Images

Overview

Quantity:	100 µg
Target:	NFATC1
Binding Specificity:	AA 110-210
Reactivity:	Human
Host:	Rabbit
Clonality:	Polyclonal
Conjugate:	This NFATC1 antibody is conjugated to Atto 488
Application:	Western Blotting (WB), Immunohistochemistry (IHC)

Product Details

Immunogen:	Synthetic peptide of Human NFATC1 (110-210 aa), conjugated to Keyhole Limpet Haemocyanin (KLH).
Specificity:	Expressed in thymus, peripheral leukocytes as T-cells and spleen. Isoforms A are preferentially expressed in effector T-cells (thymus and peripheral leukocytes) whereas isoforms B and isoforms C are preferentially expressed in naive T-cells (spleen). Isoforms B are expressed in naive T-cells after first antigen exposure and isoforms A are expressed in effector T-cells after second antigen exposure. Isoforms IA are widely expressed but not detected in liver nor pancreas, neural expression is strongest in corpus callosum. Isoforms IB are expressed mostly in muscle, cerebellum, placenta and thymus, neural expression in fetal and adult brain, strongest in corpus callosum., Detects 90 kDa, band at ~60 kDa is another isoform.
Cross-Reactivity:	Human, Rat

Product Details

Purification: Peptide Affinity Purified

Target Details

Target: NFATC1

Alternative Name: NFATC1 ([NFATC1 Products](#))

Gene ID: 4772

NCBI Accession: [NP_001265598](#)

UniProt: [O95644](#)

Pathways: [RTK Signaling](#), [WNT Signaling](#), [Fc-epsilon Receptor Signaling Pathway](#)

Application Details

Application Notes:

- WB (1:1000)
- IHC (1:50)
- optimal dilutions for assays should be determined by the user.

Comment: A 1:1000 dilution of ABIN5651047 was sufficient for detection of NFATC1 in 15 µg of rat brain cell lysates by ECL immunoblot analysis using goat anti-rabbit IgG:HRP as the secondary antibody.

Restrictions: For Research Use only

Handling

Format: Liquid

Concentration: 1 mg/mL

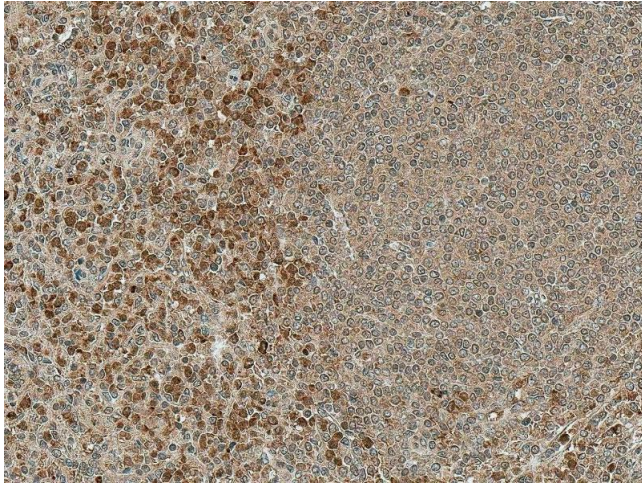
Buffer: PBS pH 7.4, 50 % glycerol, 0.09 % sodium azide, Storage buffer may change when conjugated

Preservative: Sodium azide

Precaution of Use: This product contains Sodium azide: a POISONOUS AND HAZARDOUS SUBSTANCE which should be handled by trained staff only.

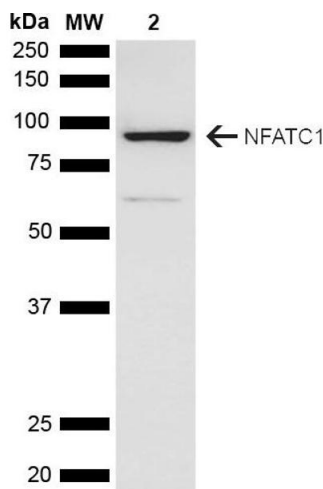
Storage: 4 °C

Storage Comment: Conjugated antibodies should be stored at 4°C



Immunohistochemistry

Image 1. Immunohistochemistry analysis using Rabbit Anti-NFATC1 Polyclonal Antibody (ABIN5651047). Tissue: Spleen. Species: Human. Fixation: Formalin Fixed Paraffin-Embedded. Primary Antibody: Rabbit Anti-NFATC1 Polyclonal Antibody (ABIN5651047) at 1:50 for 30 min at RT. Counterstain: Hematoxylin. Magnification: 10X.



Western Blotting

Image 2. Western blot analysis of Rat brain lysate showing detection of ~101.2 kDa NFATC1 protein using Rabbit Anti-NFATC1 Polyclonal Antibody (ABIN5651047). Lane 1: Molecular Weight Ladder (MW). Lane 2: Rat brain lysate. Load: 15 µg. Block: 5% Skim Milk in 1X TBST. Primary Antibody: Rabbit Anti-NFATC1 Polyclonal Antibody (ABIN5651047) at 1:1000 for 2 hours at RT. Secondary Antibody: Goat Anti-Rabbit HRP:IgG at 1:3000 for 1 hour at RT. Color Development: ECL solution for 5 min at RT. Predicted/Observed Size: ~101.2 kDa. Other Band(s): ~60 kDa isoform.