

Datasheet for ABIN5651075  
**anti-PIK3CA antibody (AA 150-250) (HRP)**



[Go to Product page](#)

1 Image

## Overview

Quantity:	100 µg
Target:	PIK3CA
Binding Specificity:	AA 150-250
Reactivity:	Mouse
Host:	Rabbit
Clonality:	Polyclonal
Conjugate:	This PIK3CA antibody is conjugated to HRP
Application:	Western Blotting (WB)

## Product Details

Immunogen:	Synthetic peptide of Human PIK3CA (150-250 aa), conjugated to Keyhole Limpet Haemocyanin (KLH).
Specificity:	Detects 55.7 kDa.
Purification:	Peptide Affinity Purified

## Target Details

Target:	PIK3CA
Alternative Name:	PIK3CA ( <a href="#">PIK3CA Products</a> )
Gene ID:	5290
NCBI Accession:	<a href="#">NP_006209</a>

## Target Details

---

UniProt: [P42336](#)

---

Pathways: [PI3K-Akt Signaling](#), [RTK Signaling](#), [TCR Signaling](#), [AMPK Signaling](#), [Interferon-gamma Pathway](#), [TLR Signaling](#), [Fc-epsilon Receptor Signaling Pathway](#), [EGFR Signaling Pathway](#), [Neurotrophin Signaling Pathway](#), [Inositol Metabolic Process](#), [Hepatitis C](#), [CXCR4-mediated Signaling Events](#), [Signaling Events mediated by VEGFR1 and VEGFR2](#), [Signaling of Hepatocyte Growth Factor Receptor](#), [VEGFR1 Specific Signals](#), [VEGF Signaling](#)

---

## Application Details

---

Application Notes: 

- WB (1:1000)
- optimal dilutions for assays should be determined by the user.

---

Comment: A 1:1000 dilution of ABIN5651075 was sufficient for detection of PIK3CA in 15 µg of mouse brain cell lysates by ECL immunoblot analysis using goat anti-rabbit IgG:HRP as the secondary antibody.

---

Restrictions: For Research Use only

---

## Handling

---

Format: Liquid

---

Concentration: 1 mg/mL

---

Buffer: PBS pH 7.4, 50 % glycerol, 0.09 % Sodium Azide

---

Preservative: Sodium azide

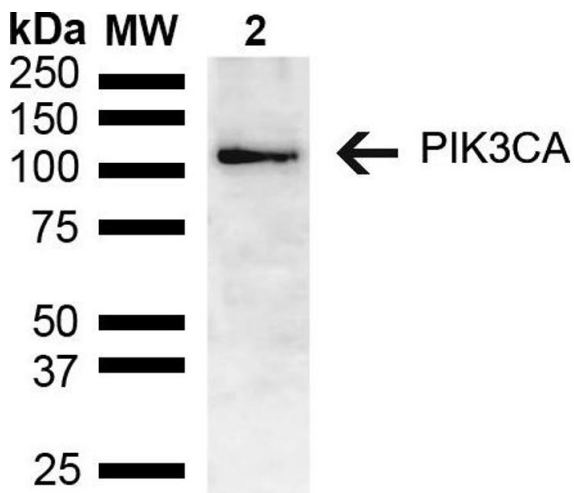
---

Precaution of Use: This product contains Sodium azide: a POISONOUS AND HAZARDOUS SUBSTANCE, which should be handled by trained staff only.

---

Storage: -20 °C

---



#### Western Blotting

**Image 1.** Western blot analysis of Mouse brain lysate showing detection of ~55.7 kDa PIK3CA protein using Rabbit Anti-PIK3CA Polyclonal Antibody (ABIN5651075). Lane 1: Molecular Weight Ladder (MW). Lane 2: Mouse brain lysate. Load: 15 µg. Block: 5 % Skim Milk in 1X TBST. Primary Antibody: Rabbit Anti-PIK3CA Polyclonal Antibody (ABIN5651075) at 1:1000 for 2 hours at RT. Secondary Antibody: Goat Anti-Rabbit HRP:IgG at 1:3000 for 1 hour at RT. Color Development: ECL solution for 5 min at RT. Predicted/Observed Size: ~55.7 kDa.