



[Go to Product page](#)

Datasheet for ABIN5651082

anti-ROR2 antibody (AA 100-200) (Atto 390)

2 Images

Overview

Quantity:	100 µg
Target:	ROR2
Binding Specificity:	AA 100-200
Reactivity:	Human, Rat
Host:	Rabbit
Clonality:	Polyclonal
Conjugate:	This ROR2 antibody is conjugated to Atto 390
Application:	Western Blotting (WB), Immunohistochemistry (IHC)

Product Details

Immunogen:	Synthetic peptide of Human ROR2 (100-200 aa), conjugated to Keyhole Limpet Haemocyanin (KLH).
Specificity:	Detects 104.7 kDa. Bands at ~60, 35 kDa are possible degradation products.
Purification:	Peptide Affinity Purified

Target Details

Target:	ROR2
Alternative Name:	ROR2 (ROR2 Products)
Background:	ROR2 is a receptor tyrosine kinase which may have a role in early cartilage and growth plate development. ROR2 expression is generally highest during embryonic development and will gradually decrease as cells terminally differentiate. Wnt5a has been identified to utilize ROR2 as

Target Details

a co-receptor for non-canonical Wnt signalling. Aberrant expression of ROR2 has been implicated in gastric, osteosarcoma, metastatic melanoma, prostate, renal cell and squamous cell carcinomas. Increased expression of ROR2 was correlated with increased metastasis. In prostate, osteosarcomas and metastatic melanomas, Wnt5a/ROR2 receptor complex formation was implicated as the mechanism for cancer progression. ROR2 seems to function as an oncogene. Primarily mis-sense mutations of ROR2 have been identified in tumours but their functional effect has not been well characterized.

Gene ID: 4920

NCBI Accession: [NP_001305133](#)

UniProt: [Q01974](#)

Pathways: [RTK Signaling](#), [WNT Signaling](#)

Application Details

Application Notes:

- WB (1:1000)
- IHC (1:50)
- optimal dilutions for assays should be determined by the user.

Comment: A 1:1000 dilution of ABIN5651082 was sufficient for detection of ROR2 in 10 µg of human HeLa cell lysates by ECL immunoblot analysis using goat anti-rabbit IgG:HRP as the secondary antibody.

Restrictions: For Research Use only

Handling

Format: Liquid

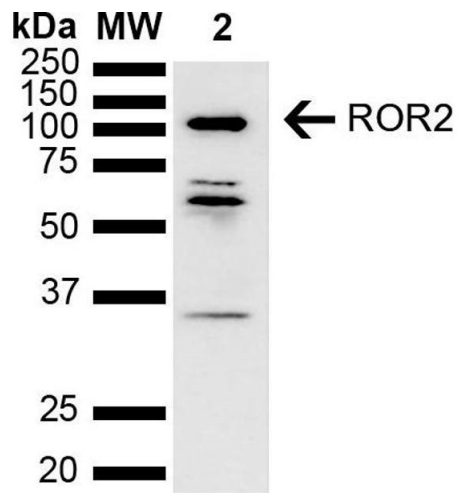
Concentration: 1 mg/mL

Buffer: PBS pH 7.4, 50 % glycerol, 0.09 % Sodium Azide

Preservative: Sodium azide

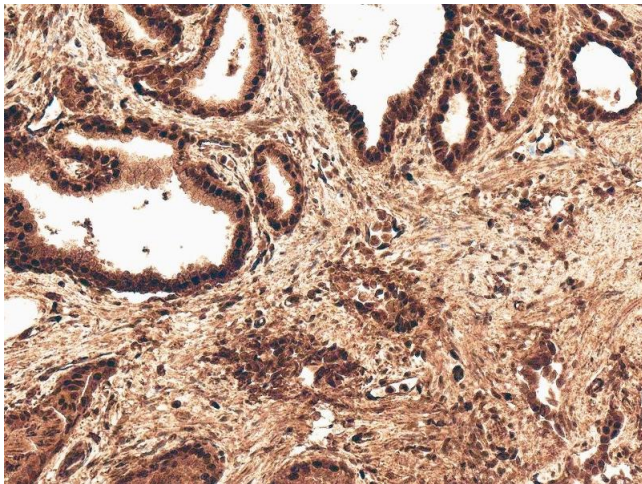
Precaution of Use: This product contains Sodium azide: a POISONOUS AND HAZARDOUS SUBSTANCE, which should be handled by trained staff only.

Storage: -20 °C



Western Blotting

Image 1. Western blot analysis of Human Cervical cancer cell line (HeLa) lysate showing detection of ~104.7 kDa ROR2 protein using Rabbit Anti-ROR2 Polyclonal Antibody (ABIN5651082). Lane 1: Molecular Weight Ladder (MW). Lane 2: Cervical Cancer cell line (HeLa) lysate. Load: 10 µg. Block: 5 % Skim Milk in 1X TBST. Primary Antibody: Rabbit Anti-ROR2 Polyclonal Antibody (ABIN5651082) at 1:1000 for 2 hours at RT. Secondary Antibody: Goat Anti-Rabbit HRP:IgG at 1:4000 for 1 hour at RT. Color Development: ECL solution for 5 min at RT. Predicted/Observed Size: ~104.7 kDa. Other Band(s): ~60, 35 kDa degradation products.



Immunohistochemistry

Image 2. Immunohistochemistry analysis using Rabbit Anti-ROR Polyclonal Antibody (ABIN5651082). Tissue: Prostate. Species: Human. Fixation: Formalin Fixed Paraffin-Embedded. Primary Antibody: Rabbit Anti-ROR Polyclonal Antibody (ABIN5651082) at 1:50 for 30 min at RT. Counterstain: Hematoxylin. Magnification: 20X.