

Datasheet for ABIN5651128  
**anti-WNT5A antibody (AA 200-300) (FITC)**



[Go to Product page](#)

2 Images

### Overview

Quantity:	100 µg
Target:	WNT5A
Binding Specificity:	AA 200-300
Reactivity:	Human
Host:	Rabbit
Clonality:	Polyclonal
Conjugate:	This WNT5A antibody is conjugated to FITC
Application:	Western Blotting (WB), Immunohistochemistry (IHC)

### Product Details

Immunogen:	Synthetic peptide of Human Wnt5a (200-300 aa), conjugated to Keyhole Limpet Haemocyanin (KLH).
Specificity:	Detects 42.3 kDa, 35 kDa. 35 kDa band is another isoform.
Purification:	Peptide Affinity Purified

### Target Details

Target:	WNT5A
Alternative Name:	Wnt5a ( <a href="#">WNT5A Products</a> )
Gene ID:	7474
NCBI Accession:	<a href="#">NP_001243034</a>

## Target Details

---

UniProt:	<a href="#">P41221</a>
Pathways:	<a href="#">WNT Signaling</a> , <a href="#">Cellular Response to Molecule of Bacterial Origin</a> , <a href="#">Positive Regulation of Immune Effector Process</a> , <a href="#">Production of Molecular Mediator of Immune Response</a> , <a href="#">Regulation of Cell Size</a> , <a href="#">Tube Formation</a>

## Application Details

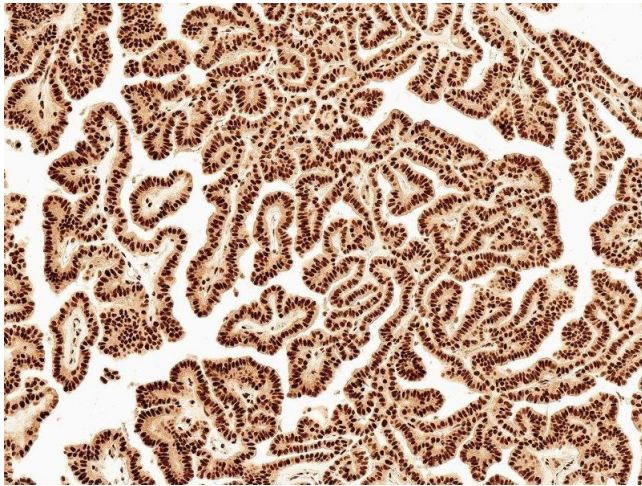
---

Application Notes:	<ul style="list-style-type: none"><li>• WB (1:1000)</li><li>• IHC (1:50)</li><li>• optimal dilutions for assays should be determined by the user.</li></ul>
Comment:	A 1:1000 dilution of ABIN5651128 was sufficient for detection of Wnt5a in 10 µg of human HeLa cell lysates by ECL immunoblot analysis using goat anti-rabbit IgG:HRP as the secondary antibody.
Restrictions:	For Research Use only

## Handling

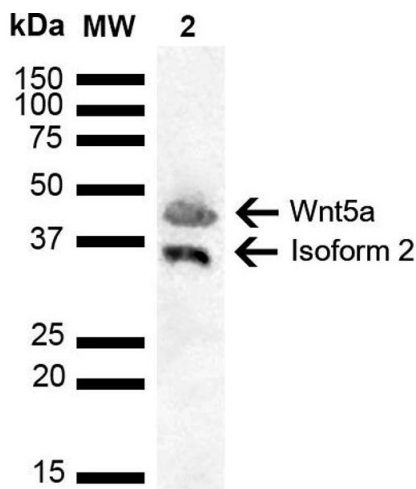
---

Format:	Liquid
Concentration:	1 mg/mL
Buffer:	PBS pH 7.4, 50 % glycerol, 0.09 % Sodium Azide
Preservative:	Sodium azide
Precaution of Use:	This product contains Sodium azide: a POISONOUS AND HAZARDOUS SUBSTANCE, which should be handled by trained staff only.
Storage:	-20 °C



### Immunohistochemistry

**Image 1.** Immunohistochemistry analysis using Rabbit Anti-Wnt5a Polyclonal Antibody (ABIN5651128). Tissue: Thyroid Carcinoma. Species: Human. Fixation: Formalin Fixed Paraffin-Embedded. Primary Antibody: Rabbit Anti-Wnt5a Polyclonal Antibody (ABIN5651128) at 1:50 for 30 min at RT. Counterstain: Hematoxylin. Magnification: 10X. HRP-DAB Detection.



### Western Blotting

**Image 2.** Western blot analysis of Human Cervical cancer cell line (HeLa) lysate showing detection of ~42.3 kDa Wnt5a protein using Rabbit Anti-Wnt5a Polyclonal Antibody (ABIN5651128). Lane 1: Molecular Weight Ladder (MW). Lane 2: Cervical Cancer cell line (HeLa) lysate. Load: 10 µg. Block: 5 % Skim Milk in 1X TBST. Primary Antibody: Rabbit Anti-Wnt5a Polyclonal Antibody (ABIN5651128) at 1:1000 for 2 hours at RT. Secondary Antibody: Goat Anti-Rabbit HRP:IgG at 1:4000 for 1 hour at RT. Color Development: ECL solution for 5 min at RT. Predicted/Observed Size: ~42.3 kDa. Other Band(s): ~35 kDa isoform 2.