

Datasheet for ABIN5651139  
**anti-TCF7L2 antibody (AA 400-500) (Atto 594)**



[Go to Product page](#)

2 Images

Overview

Quantity:	100 µg
Target:	TCF7L2
Binding Specificity:	AA 400-500
Reactivity:	Human
Host:	Rabbit
Clonality:	Polyclonal
Conjugate:	This TCF7L2 antibody is conjugated to Atto 594
Application:	Western Blotting (WB), Immunohistochemistry (IHC)

Product Details

Immunogen:	Synthetic peptide of Human TCF7L2 (400-500 aa), conjugated to Keyhole Limpet Haemocyanin (KLH).
Specificity:	Detected in epithelium from small intestine, with the highest expression at the top of the crypts and a gradient of expression from crypt to villus. Detected in colon epithelium and colon cancer, and in epithelium from mammary gland and carcinomas derived therefrom.,Detects 68 kDa, band at ~55 kDa is another isoform, band at ~75 kDa is due to post translational modification.
Cross-Reactivity:	Human, Rat
Purification:	Peptide Affinity Purified

Target Details

Target:	TCF7L2
---------	--------

## Target Details

---

Alternative Name:	<a href="#">TCF7L2 (TCF7L2 Products)</a>
Gene ID:	6934
NCBI Accession:	<a href="#">NP_001139746</a>
UniProt:	<a href="#">Q9NQB0</a>
Pathways:	<a href="#">WNT Signaling</a> , <a href="#">Positive Regulation of Peptide Hormone Secretion</a> , <a href="#">Peptide Hormone Metabolism</a> , <a href="#">Regulation of Hormone Metabolic Process</a> , <a href="#">Carbohydrate Homeostasis</a> , <a href="#">Stem Cell Maintenance</a> , <a href="#">Protein targeting to Nucleus</a>

## Application Details

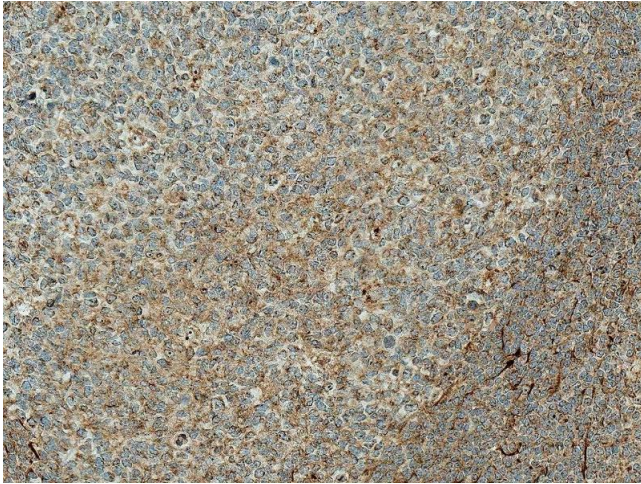
---

Application Notes:	<ul style="list-style-type: none"><li>• WB (1:1000)</li><li>• IHC (1:50)</li><li>• optimal dilutions for assays should be determined by the user.</li></ul>
Comment:	A 1:1000 dilution of ABIN5651139 was sufficient for detection of TCF7L2 in 15 µg of rat kidney cell lysates by ECL immunoblot analysis using goat anti-rabbit IgG:HRP as the secondary antibody.
Restrictions:	For Research Use only

## Handling

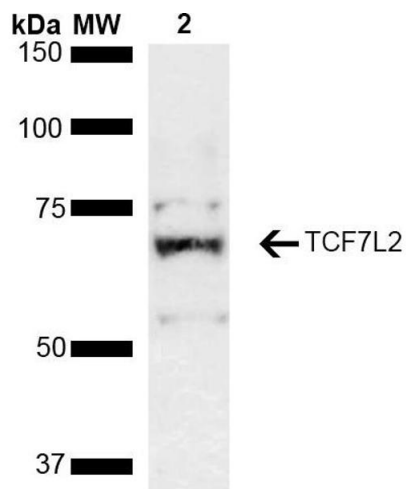
---

Format:	Liquid
Concentration:	1 mg/mL
Buffer:	PBS pH 7.4, 50 % glycerol, 0.09 % sodium azide, Storage buffer may change when conjugated
Preservative:	Sodium azide
Precaution of Use:	This product contains Sodium azide: a POISONOUS AND HAZARDOUS SUBSTANCE which should be handled by trained staff only.
Storage:	4 °C
Storage Comment:	Conjugated antibodies should be stored at 4°C



### Immunohistochemistry

**Image 1.** Immunohistochemistry analysis using Rabbit Anti-TCF7L2 Polyclonal Antibody (ABIN5651139). Tissue: Colon Cancer. Species: Human. Fixation: Formalin Fixed Paraffin-Embedded. Primary Antibody: Rabbit Anti-TCF7L2 Polyclonal Antibody (ABIN5651139) at 1:50 for 30 min at RT. Counterstain: Hematoxylin. Magnification: 10X. HRP-DAB Detection.



### Western Blotting

**Image 2.** Western blot analysis of Rat kidney lysate showing detection of ~67.9 kDa TCF7L2 protein using Rabbit Anti-TCF7L2 Polyclonal Antibody (ABIN5651139). Lane 1: Molecular Weight Ladder (MW). Lane 2: Rat kidney lysate. Load: 15 µg. Block: 5% Skim Milk in 1X TBST. Primary Antibody: Rabbit Anti-TCF7L2 Polyclonal Antibody (ABIN5651139) at 1:1000 for 2 hours at RT. Secondary Antibody: Goat Anti-Rabbit HRP:IgG at 1:3000 for 1 hour at RT. Color Development: ECL solution for 5 min at RT. Predicted/Observed Size: ~67.9 kDa. Other Band(s): ~55 kDa isoform, ~75 kDa due to post translational modification.