



[Go to Product page](#)

Datasheet for ABIN5651145
anti-TCF7L2 antibody (AA 400-500) (Biotin)

2 Images

Overview

Quantity:	100 µg
Target:	TCF7L2
Binding Specificity:	AA 400-500
Reactivity:	Human
Host:	Rabbit
Clonality:	Polyclonal
Conjugate:	This TCF7L2 antibody is conjugated to Biotin
Application:	Western Blotting (WB), Immunohistochemistry (IHC)

Product Details

Immunogen:	Synthetic peptide of Human TCF7L2 (400-500 aa), conjugated to Keyhole Limpet Haemocyanin (KLH).
Specificity:	Detected in epithelium from small intestine, with the highest expression at the top of the crypts and a gradient of expression from crypt to villus. Detected in colon epithelium and colon cancer, and in epithelium from mammary gland and carcinomas derived therefrom., Detects 68 kDa, band at ~55 kDa is another isoform, band at ~75 kDa is due to post translational modification.
Cross-Reactivity:	Human, Rat
Purification:	Peptide Affinity Purified

Target Details

Target:	TCF7L2
---------	--------

Target Details

Alternative Name: [TCF7L2 \(TCF7L2 Products\)](#)

Gene ID: 6934

NCBI Accession: [NP_001139746](#)

UniProt: [Q9NQB0](#)

Pathways: [WNT Signaling](#), [Positive Regulation of Peptide Hormone Secretion](#), [Peptide Hormone Metabolism](#), [Regulation of Hormone Metabolic Process](#), [Carbohydrate Homeostasis](#), [Stem Cell Maintenance](#), [Protein targeting to Nucleus](#)

Application Details

Application Notes:

- WB (1:1000)
- IHC (1:50)
- optimal dilutions for assays should be determined by the user.

Comment: A 1:1000 dilution of ABIN5651145 was sufficient for detection of TCF7L2 in 15 µg of rat kidney cell lysates by ECL immunoblot analysis using goat anti-rabbit IgG:HRP as the secondary antibody.

Restrictions: For Research Use only

Handling

Format: Liquid

Concentration: 1 mg/mL

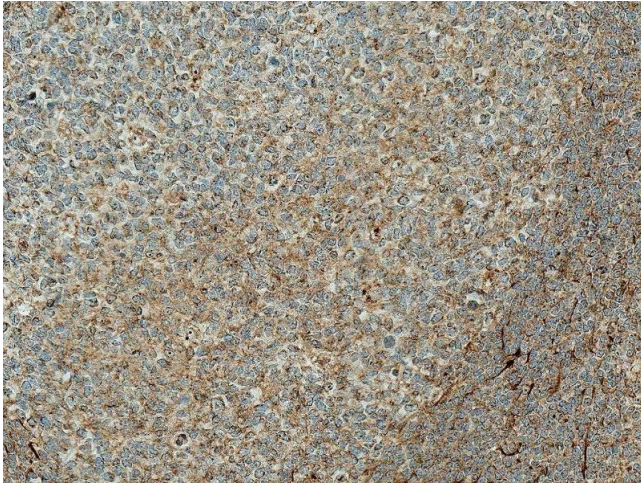
Buffer: PBS pH 7.4, 50 % glycerol, 0.09 % sodium azide, Storage buffer may change when conjugated

Preservative: Sodium azide

Precaution of Use: This product contains Sodium azide: a POISONOUS AND HAZARDOUS SUBSTANCE which should be handled by trained staff only.

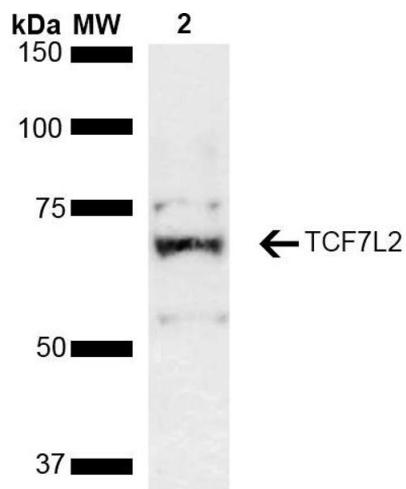
Storage: 4 °C

Storage Comment: Conjugated antibodies should be stored at 4°C



Immunohistochemistry

Image 1. Immunohistochemistry analysis using Rabbit Anti-TCF7L2 Polyclonal Antibody (ABIN5651145). Tissue: Colon Cancer. Species: Human. Fixation: Formalin Fixed Paraffin-Embedded. Primary Antibody: Rabbit Anti-TCF7L2 Polyclonal Antibody (ABIN5651145) at 1:50 for 30 min at RT. Counterstain: Hematoxylin. Magnification: 10X. HRP-DAB Detection.



Western Blotting

Image 2. Western blot analysis of Rat kidney lysate showing detection of ~67.9 kDa TCF7L2 protein using Rabbit Anti-TCF7L2 Polyclonal Antibody (ABIN5651145). Lane 1: Molecular Weight Ladder (MW). Lane 2: Rat kidney lysate. Load: 15 µg. Block: 5% Skim Milk in 1X TBST. Primary Antibody: Rabbit Anti-TCF7L2 Polyclonal Antibody (ABIN5651145) at 1:1000 for 2 hours at RT. Secondary Antibody: Goat Anti-Rabbit HRP:IgG at 1:3000 for 1 hour at RT. Color Development: ECL solution for 5 min at RT. Predicted/Observed Size: ~67.9 kDa. Other Band(s): ~55 kDa isoform, ~75 kDa due to post translational modification.