

Datasheet for ABIN5651168
anti-TCF7 antibody (AA 284-384) (PE)[Go to Product page](#)

2 Images

Overview

Quantity:	100 µg
Target:	TCF7
Binding Specificity:	AA 284-384
Reactivity:	Human
Host:	Rabbit
Clonality:	Polyclonal
Conjugate:	This TCF7 antibody is conjugated to PE
Application:	Western Blotting (WB), Immunohistochemistry (IHC)

Product Details

Immunogen:	Synthetic peptide from the C-terminal of Human TCF7 (284-384 aa), conjugated to Keyhole Limpet Haemocyanin (KLH).
Specificity:	Predominantly expressed in T-cells. Also detected in proliferating intestinal epithelial cells and in the basal epithelial cells of mammary gland epithelium., Detects 42 kDa, additional band at ~54 kDa is another isoform.
Cross-Reactivity:	Human
Purification:	Peptide Affinity Purified

Target Details

Target:	TCF7
Alternative Name:	TCF7 (TCF7 Products)

Target Details

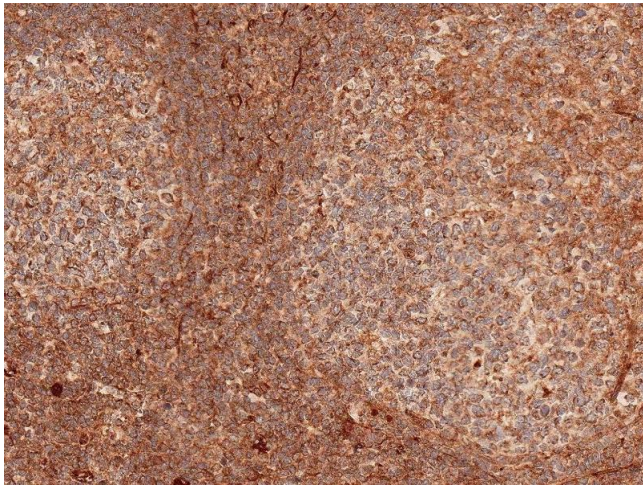
Gene ID:	6932
NCBI Accession:	NP_001128323
UniProt:	P36402
Pathways:	WNT Signaling

Application Details

Application Notes:	<ul style="list-style-type: none">• WB (1:1000)• IHC (1:50)• optimal dilutions for assays should be determined by the user.
Comment:	A 1:1000 dilution of ABIN5651168 was sufficient for detection of TCF7 in 15 µg of human HeLa cell lysates by ECL immunoblot analysis using goat anti-rabbit IgG:HRP as the secondary antibody.
Restrictions:	For Research Use only

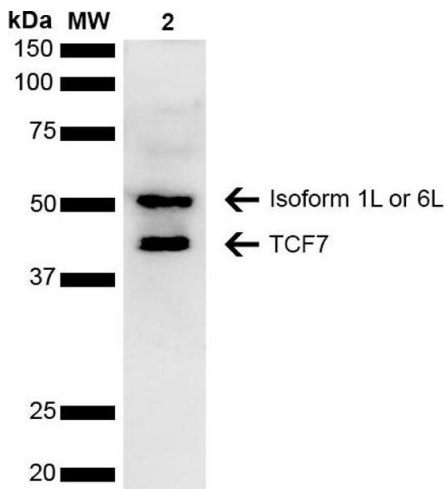
Handling

Format:	Liquid
Concentration:	1 mg/mL
Buffer:	PBS pH 7.4, 50 % glycerol, 0.09 % sodium azide, Storage buffer may change when conjugated
Preservative:	Sodium azide
Precaution of Use:	This product contains Sodium azide: a POISONOUS AND HAZARDOUS SUBSTANCE which should be handled by trained staff only.
Storage:	4 °C
Storage Comment:	Conjugated antibodies should be stored at 4°C



Immunohistochemistry

Image 1. Immunohistochemistry analysis using Rabbit Anti-TCF7 Polyclonal Antibody (ABIN5651168). Tissue: Tonsil. Species: Human. Fixation: Formalin Fixed Paraffin-Embedded. Primary Antibody: Rabbit Anti-TCF7 Polyclonal Antibody (ABIN5651168) at 1:50 for 30 min at RT. Counterstain: Hematoxylin. Magnification: 20X.



Western Blotting

Image 2. Western blot analysis of Human Cervical cancer cell line (HeLa) lysate showing detection of ~41.6 kDa TCF7 protein using Rabbit Anti-TCF7 Polyclonal Antibody (ABIN5651168). Lane 1: Molecular Weight Ladder (MW). Lane 2: Cervical Cancer cell line (HeLa) lysate. Load: 10 µg. Block: 5 % Skim Milk in 1X TBST. Primary Antibody: Rabbit Anti-TCF7 Polyclonal Antibody (ABIN5651168) at 1:1000 for 2 hours at RT. Secondary Antibody: Goat Anti-Rabbit HRP:lgG at 1:3000 for 1 hour at RT. Color Development: ECL solution for 5 min at RT. Predicted/Observed Size: ~41.6 kDa. Other Band(s): ~54 kDa isoform.