

Datasheet for ABIN5651234

anti-MMP7 antibody (AA 257-267) (Alkaline Phosphatase (AP))



[Go to Product page](#)

2 Images

Overview

Quantity:	100 µg
Target:	MMP7
Binding Specificity:	AA 257-267
Reactivity:	Human, Rat
Host:	Rabbit
Clonality:	Polyclonal
Conjugate:	This MMP7 antibody is conjugated to Alkaline Phosphatase (AP)
Application:	Western Blotting (WB), Immunohistochemistry (IHC)

Product Details

Immunogen:	Synthetic peptide from the C-terminal of Human MMP7 (257-267 aa), conjugated to Keyhole Limpet Haemocyanin (KLH).
Specificity:	Detects 29.7 kDa.
Purification:	Peptide Affinity Purified

Target Details

Target:	MMP7
Alternative Name:	MMP7 (MMP7 Products)
Gene ID:	4316
NCBI Accession:	NP_002414

Target Details

UniProt: [P09237](#)

Pathways: [Production of Molecular Mediator of Immune Response](#)

Application Details

Application Notes:

- WB (1:1000)
- IHC (1:50)
- optimal dilutions for assays should be determined by the user.

Comment: A 1:1000 dilution of ABIN5651234 was sufficient for detection of MMP7 in 10 µg of rat kidney cell lysates by ECL immunoblot analysis using goat anti-rabbit IgG:HRP as the secondary antibody.

Restrictions: For Research Use only

Handling

Format: Liquid

Concentration: 1 mg/mL

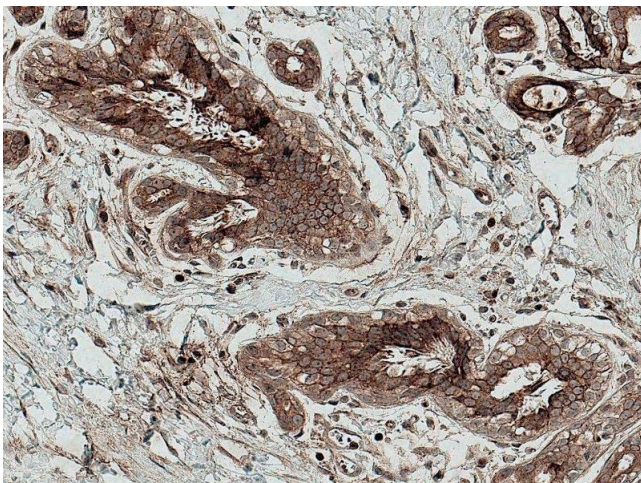
Buffer: PBS pH 7.4, 50 % glycerol, 0.09 % Sodium Azide

Preservative: Sodium azide

Precaution of Use: This product contains Sodium azide: a POISONOUS AND HAZARDOUS SUBSTANCE, which should be handled by trained staff only.

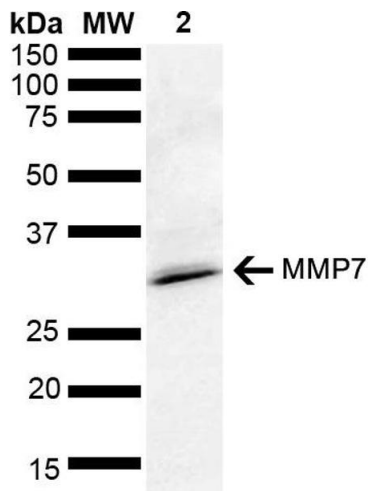
Storage: -20 °C

Images



Immunohistochemistry

Image 1. Immunohistochemistry analysis using Rabbit Anti-MMP7 Polyclonal Antibody (ABIN5651234). Tissue: Breast Cancer. Species: Human. Fixation: Formalin Fixed Paraffin-Embedded. Primary Antibody: Rabbit Anti-MMP7 Polyclonal Antibody (ABIN5651234) at 1:50 for 30 min at RT. Counterstain: Hematoxylin. Magnification: 20X.



Western Blotting

Image 2. Western blot analysis of Rat kidney lysate showing detection of ~28 kDa MMP7 protein using Rabbit Anti-MMP7 Polyclonal Antibody (ABIN5651234). Lane 1: Molecular Weight Ladder (MW). Lane 2: Rat kidney lysate. Load: 10 μ g. Block: 5% Skim Milk in 1X TBST. Primary Antibody: Rabbit Anti-MMP7 Polyclonal Antibody (ABIN5651234) at 1:1000 for 2 hours at RT. Secondary Antibody: Goat Anti-Rabbit HRP:IgG at 1:4000 for 1 hour at RT. Color Development: ECL solution for 5 min at RT. Predicted/Observed Size: ~28 kDa.