



[Go to Product page](#)

Datasheet for ABIN565141

anti-POLA2 antibody (AA 1-598)

4 Images

Overview

Quantity:	100 µg
Target:	POLA2
Binding Specificity:	AA 1-598
Reactivity:	Human
Host:	Mouse
Clonality:	Monoclonal
Conjugate:	This POLA2 antibody is un-conjugated
Application:	Western Blotting (WB), ELISA, Immunofluorescence (IF)

Product Details

Purpose:	Mouse monoclonal antibody raised against a full length recombinant POLA2.
Immunogen:	POLA2 (AAH01347, 1 a.a. ~ 598 a.a) full-length recombinant protein with GST tag. MW of the GST tag alone is 26 KDa.
Sequence:	MSASAQQLAE ELQIFGLDCE EALIEKLVLEL CVQYGQNEEG MVGELIAFCT STHKVGLTSE ILNSFEHEFL SKRLSKARHS TCKDSGHAGA RDIVSIQELI EVEEEEEILL NSYTTPSKGS QKRAISTPET PLTKRSVSTR SPHQLLSPSS FSPSATPSQK YNSRSNRGEV VTSFGLAQQV SWSGRGGAGN ISLKVLCPE ALTGSYKSMF QKLPDIREVL TCKIEELGSE LKEHYKIEAF TPLLAPAQEP VTLLGQIGCD SNGKLNKSV ILEGDREHSS GAQIPVDLSE LKEYSLFPGQ VVIMEGINTT GRKLVATKLY EGVPLPFYQP TEEDADFEQS MVLVACGPYT TSDSITYDPL LDLIAVINHD RPDVCILFGP FLDKHEQVE NCLLTSPFED IFKQCLRTII EGTRSSGSHL VFVPSLRDVH HEPVYPQPPF SYSDLSREDK KQVQFVSEPC SLSINGVIFG LTSTDLLFHL GAEEISSSSG TSDRFSRILK HILTQRSYYP LYPPQEDMAI DYSEFYVYAQ LPVTPDVLII

Product Details

PSELRYFVKD VLGCVCVNPGR LTKGQVGGT FARLYLRRPA ADGAERQSPC IAVQVVRI

Clone: 2F11

Isotype: IgG1

Cross-Reactivity: Human

Characteristics: Antibody Reactive Against Recombinant Protein.

Target Details

Target: POLA2

Alternative Name: POLA2 ([POLA2 Products](#))

Background: Full Gene Name: polymerase (DNA directed), alpha 2 (70kD subunit)

Synonyms: FLJ21662,FLJ37250

Gene ID: 23649

Pathways: [Telomere Maintenance](#), [Mitotic G1-G1/S Phases](#), [DNA Replication](#), [Protein targeting to Nucleus](#),
[Synthesis of DNA](#), [SARS-CoV-2 Protein Interactome](#)

Application Details

Application Notes: Optimal working dilution should be determined by the investigator.

Restrictions: For Research Use only

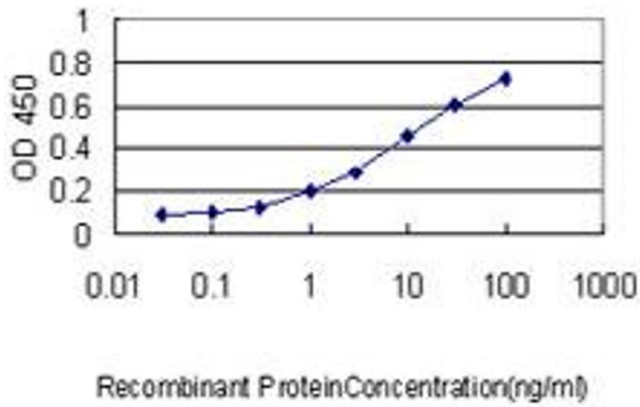
Handling

Buffer: In 1x PBS, pH 7.4

Handling Advice: Aliquot to avoid repeated freezing and thawing.

Storage: -20 °C

Storage Comment: Store at -20°C or lower. Aliquot to avoid repeated freezing and thawing.



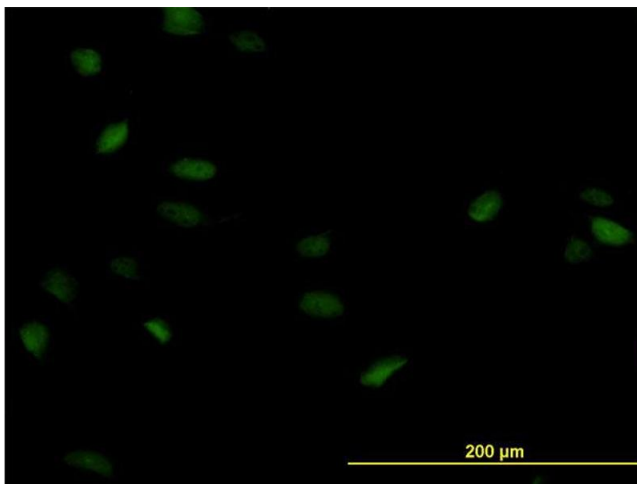
ELISA

Image 1. Detection limit for recombinant GST tagged POLA2 is approximately 0.1ng/ml as a capture antibody.



Western Blotting

Image 2. Western Blot detection against Immunogen (91.52 KDa) .



Immunofluorescence

Image 3. Immunofluorescence of monoclonal antibody to POLA2 on HeLa cell. [antibody concentration 10 ug/ml]

Please check the [product details page](#) for more images. Overall 4 images are available for ABIN565141.