



[Go to Product page](#)

Datasheet for ABIN565142

anti-Plexin B2 antibody (AA 1506-1611)

1 Image

Overview

Quantity:	50 µL
Target:	Plexin B2 (PLXNB2)
Binding Specificity:	AA 1506-1611
Reactivity:	Human
Host:	Mouse
Clonality:	Polyclonal
Conjugate:	This Plexin B2 antibody is un-conjugated
Application:	ELISA, Western Blotting (WB)

Product Details

Purpose:	Mouse polyclonal antibody raised against a partial recombinant PLXNB2.
Immunogen:	PLXNB2 (XP_371474, 1506 a.a. ~ 1611 a.a) partial recombinant protein with GST tag.
Sequence:	LTVSIVIQDE GVD AIPVKVL NCDTISQVKE KIIDQVYRGQ PCSCWPRPDS VVLEWRPGST AQILSDLDLT SQREGRWKRV NTLMHYNVRD GATLILSKVG VSQQPE
Cross-Reactivity:	Human
Characteristics:	Antibody Reactive Against Recombinant Protein.

Target Details

Target:	Plexin B2 (PLXNB2)
Alternative Name:	PLXNB2 (PLXNB2 Products)

Target Details

Background:	Full Gene Name: plexin B2 Synonyms: KIAA0315,MM1,Nbla00445,PLEXB2,dJ402G11.3
Gene ID:	23654
NCBI Accession:	XM_371474
Pathways:	Tube Formation

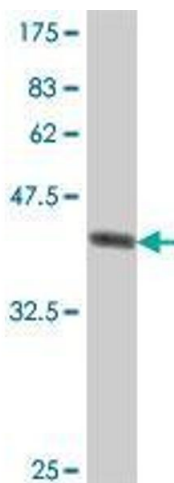
Application Details

Application Notes:	Optimal working dilution should be determined by the investigator.
Restrictions:	For Research Use only

Handling

Format:	Liquid
Buffer:	50 % glycerol
Handling Advice:	Aliquot to avoid repeated freezing and thawing.
Storage:	-20 °C
Storage Comment:	Store at -20°C or lower. Aliquot to avoid repeated freezing and thawing.

Images



Western Blotting

Image 1. Western Blot detection against Immunogen (37.77 kDa) .