



Datasheet for ABIN565159  
**anti-SHC2 antibody (AA 718-829)**



[Go to Product page](#)

1 Image

Overview

Quantity:	50 µL
Target:	SHC2
Binding Specificity:	AA 718-829
Reactivity:	Human
Host:	Mouse
Clonality:	Polyclonal
Conjugate:	This SHC2 antibody is un-conjugated
Application:	Western Blotting (WB), ELISA

Product Details

Purpose:	Mouse polyclonal antibody raised against a partial recombinant SHC2.
Immunogen:	SHC2 (XP_375550, 718 a.a. ~ 829 a.a) partial recombinant protein with GST tag.
Sequence:	LALTQPCALT ALDQGPSPSL RDACSLPWDV GSTGTAPPGD GYVQADARGP PDHEEHLYVN TQGLDAPEPE DSPKKDLFDM RPFEDALKLH ECSVAAGVTA APLPLEDQWP SP
Cross-Reactivity:	Human
Characteristics:	Antibody Reactive Against Recombinant Protein.

Target Details

Target:	SHC2
Alternative Name:	SHC2 ( <a href="#">SHC2 Products</a> )

## Target Details

Background:	Full Gene Name: SHC (Src homology 2 domain containing) transforming protein 2 Synonyms: SCK,SHCB,SLI
Gene ID:	25759
NCBI Accession:	<a href="#">XM_375550</a>
Pathways:	<a href="#">RTK Signaling</a> , <a href="#">Neurotrophin Signaling Pathway</a> , <a href="#">Signaling Events mediated by VEGFR1 and VEGFR2</a> , <a href="#">VEGFR1 Specific Signals</a> , <a href="#">VEGF Signaling</a>

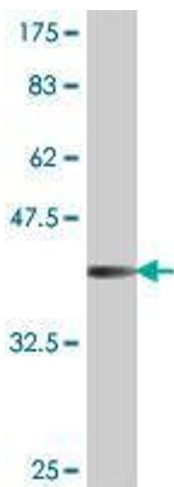
## Application Details

Application Notes:	Optimal working dilution should be determined by the investigator.
Restrictions:	For Research Use only

## Handling

Format:	Liquid
Buffer:	50 % glycerol
Handling Advice:	Aliquot to avoid repeated freezing and thawing.
Storage:	-20 °C
Storage Comment:	Store at -20°C or lower. Aliquot to avoid repeated freezing and thawing.

## Images



### Western Blotting

**Image 1.** Western Blot detection against Immunogen (38.43 KDa) .