



[Go to Product page](#)

Datasheet for ABIN565161

anti-CBY1/PGEA1 antibody (AA 18-126)

1 Image

Overview

Quantity:	50 µL
Target:	CBY1/PGEA1 (CBY1)
Binding Specificity:	AA 18-126
Reactivity:	Human
Host:	Mouse
Clonality:	Polyclonal
Conjugate:	This CBY1/PGEA1 antibody is un-conjugated
Application:	ELISA, Western Blotting (WB)

Product Details

Purpose:	Mouse polyclonal antibody raised against a partial recombinant CBY1.
Immunogen:	CBY1 (NP_056188, 18 a.a. ~ 126 a.a) partial recombinant protein with GST tag.
Sequence:	SASLSNLHSL DRSTREVELG LEYGSP TMNL AGQSLKFENG QWIAETGVSG GVD RREVQRL RRRNQQL EEE NLLRLKVDI LLDMLSESTA ESHLMEKELD ELRISRKRK
Cross-Reactivity:	Human
Characteristics:	Antibody Reactive Against Recombinant Protein.

Target Details

Target:	CBY1/PGEA1 (CBY1)
Alternative Name:	CBY1 (CBY1 Products)

Target Details

Background:	Full Gene Name: chibby homolog 1 (Drosophila) Synonyms: C22orf2,CBY,HS508I15A,PGEA1,PIGEA-14,PIGEA14,arb1
Gene ID:	25776
NCBI Accession:	NM_015373

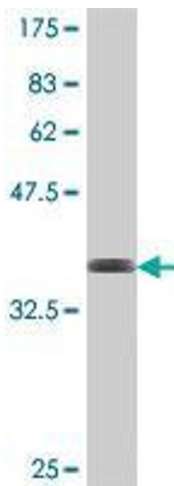
Application Details

Application Notes:	Optimal working dilution should be determined by the investigator.
Restrictions:	For Research Use only

Handling

Format:	Liquid
Buffer:	50 % glycerol
Handling Advice:	Aliquot to avoid repeated freezing and thawing.
Storage:	-20 °C
Storage Comment:	Store at -20°C or lower. Aliquot to avoid repeated freezing and thawing.

Images



Western Blotting

Image 1. Western Blot detection against Immunogen (38.1 KDa).