



[Go to Product page](#)

Datasheet for ABIN565162

## anti-CBY1/PGEA1 antibody (AA 18-126)

### 3 Images

#### Overview

Quantity:	100 µg
Target:	CBY1/PGEA1 (CBY1)
Binding Specificity:	AA 18-126
Reactivity:	Human
Host:	Mouse
Clonality:	Monoclonal
Conjugate:	This CBY1/PGEA1 antibody is un-conjugated
Application:	ELISA, Western Blotting (WB)

#### Product Details

Purpose:	Mouse monoclonal antibody raised against a partial recombinant CBY1.
Immunogen:	CBY1 (NP_056188, 18 a.a. ~ 126 a.a) partial recombinant protein with GST tag. MW of the GST tag alone is 26 KDa.
Sequence:	SASLSNLHSL DRSTREVELG LEYGSPTMNL AGQSLKFENG QWIAETGVSG GVDRREVQRL RRRNQLEEE NLLRLKVDI LLDMLSESTA ESHLMEKELD ELRISRKRK
Clone:	2F2
Isotype:	IgG1
Cross-Reactivity:	Human
Characteristics:	Antibody Reactive Against Recombinant Protein.

## Target Details

Target:	CBY1/PGEA1 (CBY1)
Alternative Name:	CBY1 ( <a href="#">CBY1 Products</a> )
Background:	Full Gene Name: chibby homolog 1 (Drosophila) Synonyms: C22orf2,CBY,HS508I15A,PGEA1,PIGEA-14,PIGEA14,arb1
Gene ID:	25776
NCBI Accession:	<a href="#">NM_015373</a>

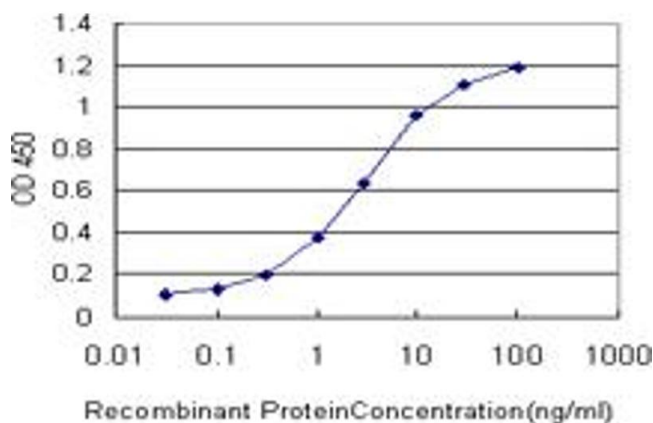
## Application Details

Application Notes:	Optimal working dilution should be determined by the investigator.
Restrictions:	For Research Use only

## Handling

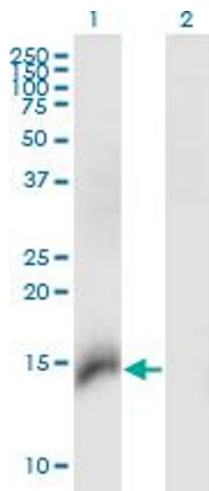
Buffer:	In 1x PBS, pH 7.4
Handling Advice:	Aliquot to avoid repeated freezing and thawing.
Storage:	-20 °C
Storage Comment:	Store at -20°C or lower. Aliquot to avoid repeated freezing and thawing.

## Images



### ELISA

**Image 1.** Detection limit for recombinant GST tagged CBY1 is approximately 0.1 ng/ml as a capture antibody.

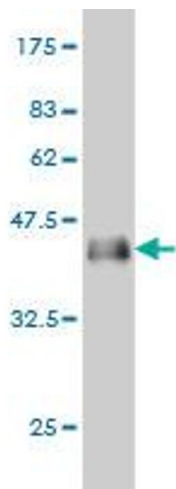


### Western Blotting

**Image 2.** Western Blot analysis of CBY1 expression in transfected 293T cell line by CBY1 monoclonal antibody (M06), clone 2F2.

Lane 1: CBY1 transfected lysate (Predicted MW: 14.5 kDa).

Lane 2: Non-transfected lysate.



### Western Blotting

**Image 3.** Western Blot detection against Immunogen (37.73 kDa).