



Datasheet for ABIN565169  
**anti-SPDEF/PSE antibody (AA 92-200)**



[Go to Product page](#)

3 Images

Overview

Quantity:	100 µg
Target:	SPDEF/PSE (SPDEF)
Binding Specificity:	AA 92-200
Reactivity:	Human
Host:	Mouse
Clonality:	Monoclonal
Conjugate:	This SPDEF/PSE antibody is un-conjugated
Application:	Western Blotting (WB), ELISA

Product Details

Purpose:	Mouse monoclonal antibody raised against a partial recombinant SPDEF.
Immunogen:	SPDEF (NP_036523, 92 a.a. ~ 200 a.a) partial recombinant protein with GST tag. MW of the GST tag alone is 26 KDa.
Sequence:	QCPVIDSQAP AGSLDLVPGG LTLEEHSLEQ VQSMVVGEVL KDIETACKLL NITADPMDWS PSNVQKLLW TEHQYRLPPM GKAFQELAGK ELCAMSEEQF RQRSPLGGD
Clone:	4A5
Isotype:	IgG2b
Cross-Reactivity:	Human
Characteristics:	Antibody Reactive Against Recombinant Protein.

## Target Details

Target:	SPDEF/PSE (SPDEF)
Alternative Name:	SPDEF ( <a href="#">SPDEF Products</a> )
Background:	Full Gene Name: SAM pointed domain containing ets transcription factor Synonyms: PDEF,RP11-375E1__A.3,bA375E1.3
Gene ID:	25803
NCBI Accession:	<a href="#">NM_012391</a>

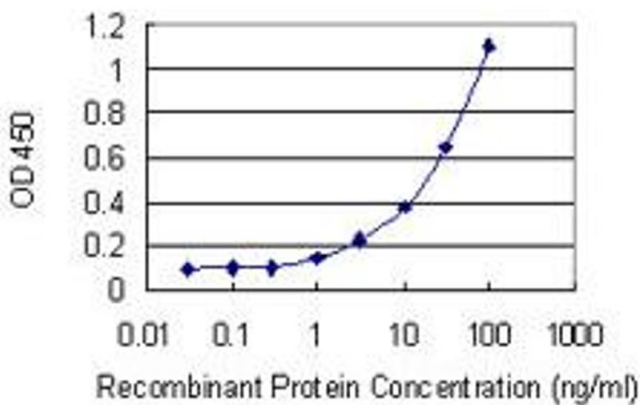
## Application Details

Application Notes:	Optimal working dilution should be determined by the investigator.
Restrictions:	For Research Use only

## Handling

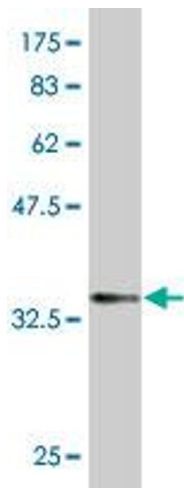
Buffer:	In 1x PBS, pH 7.4
Handling Advice:	Aliquot to avoid repeated freezing and thawing.
Storage:	-20 °C
Storage Comment:	Store at -20°C or lower. Aliquot to avoid repeated freezing and thawing.

## Images



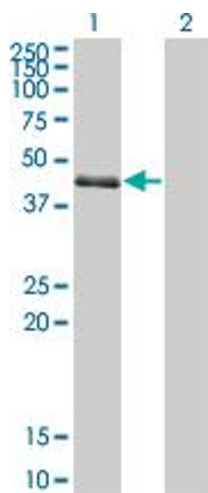
### ELISA

**Image 1.** Detection limit for recombinant GST tagged SPDEF is 0.3 ng/ml as a capture antibody.



### Western Blotting

**Image 2.** Western Blot detection against Immunogen (37.73 KDa).



### Western Blotting

**Image 3.** Western Blot analysis of SPDEF expression in transfected 293T cell line by SPDEF monoclonal antibody (M01), clone 4A5.

Lane 1: SPDEF transfected lysate(37.518 KDa).

Lane 2: Non-transfected lysate.