



[Go to Product page](#)

Datasheet for ABIN565175
anti-CCRN4L antibody (AA 64-152)

3 Images

Overview

Quantity:	100 µg
Target:	CCRN4L
Binding Specificity:	AA 64-152
Reactivity:	Human
Host:	Mouse
Clonality:	Monoclonal
Conjugate:	This CCRN4L antibody is un-conjugated
Application:	Western Blotting (WB), ELISA, Immunohistochemistry (Paraffin-embedded Sections) (IHC (p))

Product Details

Purpose:	Mouse monoclonal antibody raised against a partial recombinant CCRN4L.
Immunogen:	CCRN4L (NP_036250, 64 a.a. ~ 152 a.a) partial recombinant protein with GST tag. MW of the GST tag alone is 26 KDa.
Sequence:	VCSMGTTGTSR LYSALAKTLN SSAASQHPEY LVSPDPEHLE PIDPKELLE CRAVLHTRPP RFQRDFVDLR TDCPSTHPPI RVMQWNILA
Clone:	3E8
Isotype:	IgG2a
Cross-Reactivity:	Human
Characteristics:	Antibody Reactive Against Recombinant Protein.

Target Details

Target:	CCRN4L
Alternative Name:	CCRN4L (CCRN4L Products)
Background:	Full Gene Name: CCR4 carbon catabolite repression 4-like (<i>S. cerevisiae</i>) Synonyms: CCR4L,MGC142054,MGC142060,MGC4120817,MGC78549,NOC
Gene ID:	25819
NCBI Accession:	NM_012118
Pathways:	Ribonucleoprotein Complex Subunit Organization

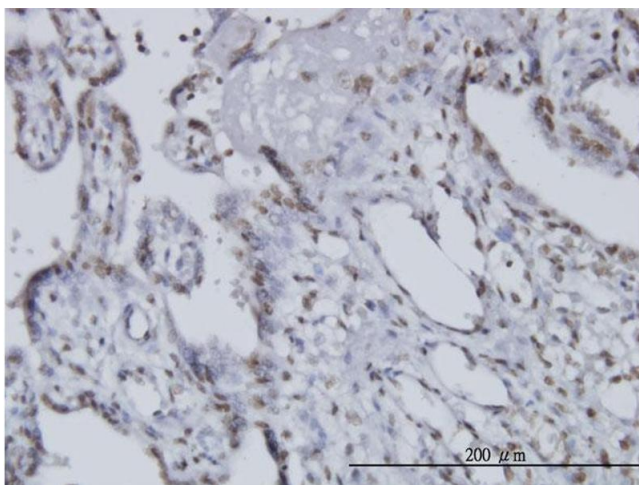
Application Details

Application Notes:	Optimal working dilution should be determined by the investigator.
Restrictions:	For Research Use only

Handling

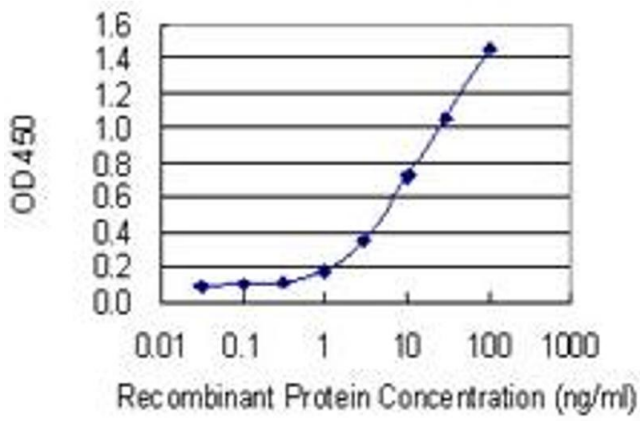
Buffer:	In 1x PBS, pH 7.4
Handling Advice:	Aliquot to avoid repeated freezing and thawing.
Storage:	-20 °C
Storage Comment:	Store at -20°C or lower. Aliquot to avoid repeated freezing and thawing.

Images



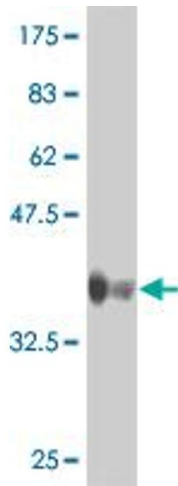
Immunostaining

Image 1. Immunoperoxidase of monoclonal antibody to CCRN4L on formalin-fixed paraffin-embedded human placenta. [antibody concentration 3 ug/ml]



ELISA

Image 2. Detection limit for recombinant GST tagged CCRN4L is 0.1 ng/ml as a capture antibody.



Western Blotting

Image 3. Western Blot detection against Immunogen (35.53 kDa).