



[Go to Product page](#)

Datasheet for ABIN565208
anti-CHMP2B antibody (AA 1-213)

1 Image

Overview

Quantity:	100 µg
Target:	CHMP2B
Binding Specificity:	AA 1-213
Reactivity:	Human
Host:	Mouse
Clonality:	Monoclonal
Conjugate:	This CHMP2B antibody is un-conjugated
Application:	ELISA

Product Details

Purpose:	Mouse monoclonal antibody raised against a full length recombinant CHMP2B.
Immunogen:	CHMP2B (AAH01553.1, 1 a.a. ~ 213 a.a) full-length recombinant protein with GST tag. MW of the GST tag alone is 26 KDa.
Sequence:	MASLFKKKT V DDVIKEQNRE LRGTQR A IIR DRAALEKQEK QLELEIKKMA KIGNKEACKV LAKQLVHLRK QKTRTFVSS KVTSMSTQTK VMNSQMKMAG AMSTTAKTMQ AVNKKMDPQK TLQTMQNFQK ENMKMEMTEE MINDTLDDIF DGSDDDEESQ DIVNQLDEI GIEISGKMAK APSAARSLPS ASTSKATISD EEIERQLKAL GVD
Clone:	2H6-1E6
Isotype:	IgG1
Cross-Reactivity:	Human

Product Details

Characteristics: Antibody Reactive Against Recombinant Protein.

Target Details

Target: CHMP2B

Alternative Name: CHMP2B ([CHMP2B Products](#))

Background: Full Gene Name: chromatin modifying protein 2B
Synonyms: CHMP2.5,DKFZp564O123,DMT1,VPS2-2,VPS2B

Gene ID: 25978

Application Details

Application Notes: Optimal working dilution should be determined by the investigator.

Restrictions: For Research Use only

Handling

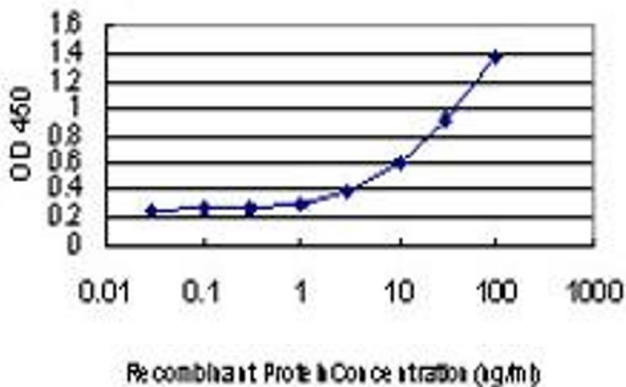
Buffer: In 1x PBS, pH 7.4

Handling Advice: Aliquot to avoid repeated freezing and thawing.

Storage: -20 °C

Storage Comment: Store at -20°C or lower. Aliquot to avoid repeated freezing and thawing.

Images



ELISA

Image 1. Detection limit for recombinant GST tagged CHMP2B is approximately 1ng/ml as a capture antibody.